

## HUMAN IL1R2 PROTEIN, HIS TAG

**Cat.#:** 11536

**Product Name:** Human IL1R2 Protein

**Size:** 10 µg, 50 µg and 100 µg

**Synonyms:** IL-1RT2;IL1RB;CDw121b;IL-1R-beta;CD121b

**Target:** IL1R2

**UNIPROT ID:** P27930

**Description:** Recombinant human IL1R2 protein with C-terminal 6xHis tag

**Background:** The protein encoded by this gene is a cytokine receptor that belongs to the interleukin 1 receptor family. This protein binds interleukin alpha (IL1A), interleukin beta (IL1B), and interleukin 1 receptor, type I (IL1R1/IL1RA), and acts as a decoy receptor that inhibits the activity of its ligands. Interleukin 4 (IL4) is reported to antagonize the activity of interleukin 1 by inducing the expression and release of this cytokine. This gene and three other genes form a cytokine receptor gene cluster on chromosome 2q12. Alternative splicing results in multiple transcript variants and protein isoforms. Alternative splicing produces both membrane-bound and soluble proteins. A soluble protein is also produced by proteolytic cleavage. [provided by RefSeq, May 2012]

**Species/Host:** HEK293

**Molecular Weight:** The protein has a predicted molecular mass of 38.6 kDa after removal of the signal peptide. The apparent molecular mass of IL1R2-His is approximately 35-55 kDa due to glycosylation.

**Molecular Characterization:** IL1R2(Phe14-Glu343) 6xHis tag

**Purity:** The purity of the protein is greater than 85% as determined by SDS-PAGE and Coomassie blue staining.

**Formulation & Reconstitution:** Lyophilized from nanodisc solubilization buffer (20 mM Tris-HCl, 150 mM NaCl, pH 8.0). Normally 5% – 8% trehalose is added as protectants before lyophilization.

**Storage & Shipping:** Store at -20°C to -80°C for 12 months in lyophilized form. After reconstitution, if not intended for use within a month, aliquot and store at -80°C (Avoid repeated freezing and thawing). Lyophilized proteins are shipped at ambient temperature.

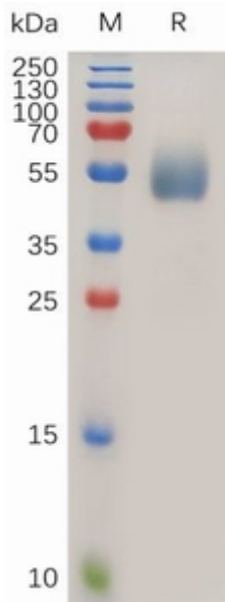


Figure 1. Human IL1R2 Protein, His Tag on SDS-PAGE under reducing condition.