

HUMAN IL21 PROTEIN, HFC TAG

Cat.#: 11759

Product Name: Human IL21 Protein

Size: 10 µg, 50 µg and 100 µg

Synonyms: IL21; a11; interleukin-21

Target: IL21

UNIPROT ID: Q9HBE4

Description: Recombinant Human IL21 with C-terminal Human Fc tag

Background: This gene encodes a member of the common-gamma chain family of cytokines with immunoregulatory activity. The encoded protein plays a role in both the innate and adaptive immune responses by inducing the differentiation, proliferation and activity of multiple target cells including macrophages, natural killer cells, B cells and cytotoxic T cells. Dysregulation of this gene plays a role in multiple immune-mediated diseases including lupus, psoriasis and chronic inflammatory diseases. Alternatively spliced transcript variants encoding multiple isoforms have been observed for this gene. [provided by RefSeq, Dec 2011]

Species/Host: HEK293

Molecular Weight: The protein has a predicted molecular mass of 41.6 kDa after removal of the signal peptide. The apparent molecular mass of IL21-hFc is approximately 35-55 kDa due to glycosylation.

Molecular Characterization: IL21(Gln30-Ser162) hFc(Glu99-Ala330)

Purity: The purity of the protein is greater than 95% as determined by SDS-PAGE and Coomassie blue staining.

Formulation & Reconstitution: Lyophilized from nanodisc solubilization buffer (20 mM Tris-HCl, 150 mM NaCl, pH 8.0). Normally 5% – 8% trehalose is added as protectants before lyophilization.

Storage & Shipping: Store at -20°C to -80°C for 12 months in lyophilized form. After reconstitution, if not intended for use within a month, aliquot and store at -80°C (Avoid repeated freezing and thawing). Lyophilized proteins are shipped at ambient temperature.

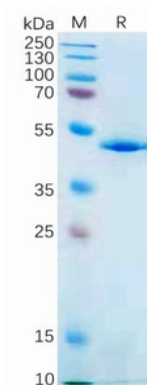


Figure 1. Human IL21 Protein, hFc Tag on SDS-PAGE under reducing condition.

Human IL21, hFc tagged protein ELISA

0.2 μ g of Human IL21R, His tagged protein per well

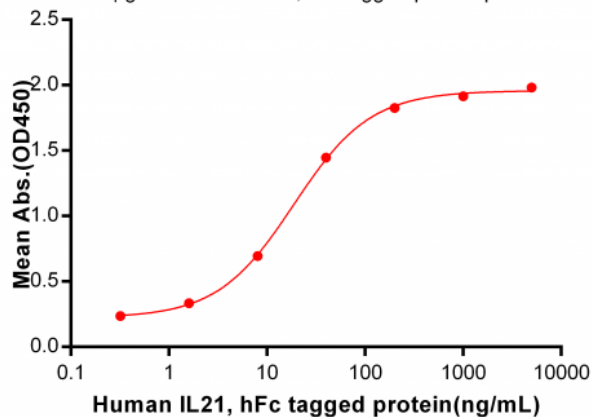


Figure 2. ELISA plate pre-coated by 2 μ g/ml (100 μ l/well) Human IL21R, His tagged protein 11384 can bind Human IL21, hFc Tagged protein (11759) in a linear range of 1.6-40 ng/ml.

Human IL21, hFc Tagged protein ELISA

0.2 μ g of Human IL21, hFc tagged protein per well

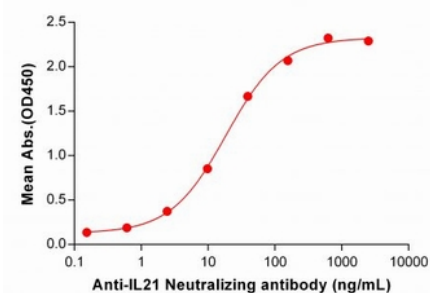


Figure 3. ELISA plate pre-coated by 2 μ g/ml (100 μ l/well) Human IL21 Protein, hFc Tag (11759) can bind Anti-IL21 Neutralizing antibody 28103 in a linear range of 2.44-156.25 ng/mL.