

## HUMAN IL6R PROTEIN

**Cat.#:** 12284

**Product Name:** Human IL6R Protein

**Size:** 10 µg, 50 µg and 100 µg

**Synonyms:** CD126;gp80;IL-6R-1;IL-6RA;IL6Q;IL6RA;IL6RQ

**Target:** IL6R

**UNIPROT ID:** P08887

**Description:** Recombinant Human IL6R Protein with C-terminal 6xHis tag

**Background:** This gene encodes a subunit of the interleukin 6 (IL6) receptor complex. Interleukin 6 is a potent pleiotropic cytokine that regulates cell growth and differentiation and plays an important role in the immune response. The IL6 receptor is a protein complex consisting of this protein and interleukin 6 signal transducer (IL6ST/GP130/IL6-beta), a receptor subunit also shared by many other cytokines. Dysregulated production of IL6 and this receptor are implicated in the pathogenesis of many diseases, such as multiple myeloma, autoimmune diseases and prostate cancer. Alternatively spliced transcript variants encoding distinct isoforms have been reported. A pseudogene of this gene is found on chromosome 9.

**Species/Host:** HEK293

**Molecular Weight:** The protein has a predicted molecular mass of 39.4 kDa after removal of the signal peptide. The apparent molecular mass of IL6R-His is approximately 55-70 kDa due to glycosylation.

**Molecular Characterization:** IL6R(Leu20-Pro365) 6xHis tag

**Purity:** The purity of the protein is greater than 95% as determined by SDS-PAGE and Coomassie blue staining.

**Formulation & Reconstitution:** Lyophilized from nanodisc solubilization buffer (20 mM Tris-HCl, 150 mM NaCl, pH 8.0). Normally 5% – 8% trehalose is added as protectants before lyophilization.

**Storage & Shipping:** Store at -20°C to -80°C for 12 months in lyophilized form. After reconstitution, if not intended for use within a month, aliquot and store at -80°C (Avoid repeated freezing and thawing). Lyophilized proteins are shipped at ambient temperature.

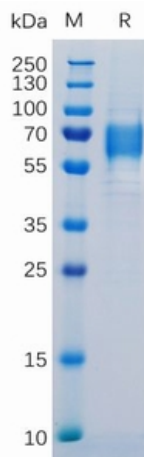


Figure 1. Human IL6R Protein, His Tag on SDS-PAGE under reducing condition.

## Human IL6R, His Tagged protein ELISA

0.2  $\mu$ g of IL6R, His Tagged protein per well

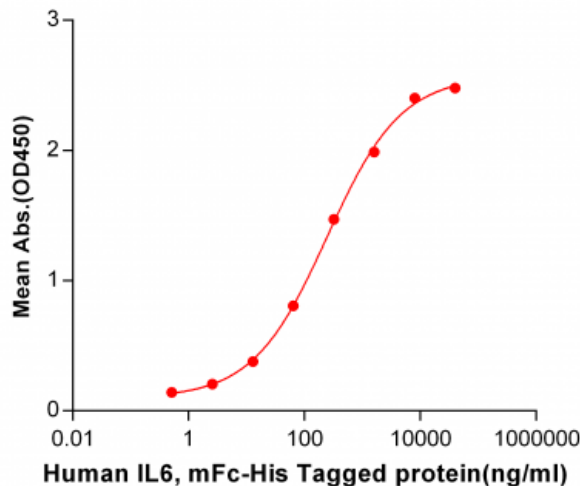


Figure 2. ELISA plate pre-coated by 2  $\mu$ g/ml (100  $\mu$ l/well) Human IL6R, His tagged protein (12284) can bind Human IL6, mFc-His tagged protein 11160 in a linear range of 0.512-40000 ng/ml.

## Human IL6R, His Tagged Protein ELISA

0.2  $\mu$ g of Human IL6R, His Tagged protein per well

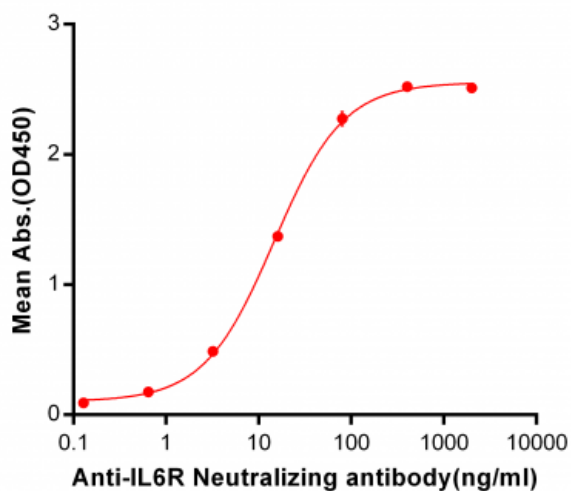


Figure 3. ELISA plate pre-coated by 2  $\mu$ g/ml (100  $\mu$ l/well) Human IL6R, His tagged protein (12284) can bind Anti-IL6R Neutralizing antibody 28050 in a linear range of 0.64-80 ng/ml.