

HUMAN LIPG PROTEIN, HIS TAG

Cat.#: 11521

Product Name: Human LIPG Protein

Size: 10 µg, 50 µg and 100 µg

Synonyms: Endothelial lipase;DL;L;phospholipase A1

Target: LIPG

UNIPROT ID: Q9Y5X9

Description: Recombinant human LIPG protein with C-terminal 6xHis tag

Background: The protein encoded by this gene has substantial phospholipase activity and may be involved in lipoprotein metabolism and vascular biology. This protein is designated a member of the TG lipase family by its sequence and characteristic lid region which provides substrate specificity for enzymes of the TG lipase family. [provided by RefSeq, Jul 2008]

Species/Host: HEK293

Molecular Weight: The protein has a predicted molecular mass of 55.4 kDa after removal of the signal peptide. The apparent molecular mass of LIPG-His is approximately 55–70 kDa due to glycosylation.

Molecular Characterization: LIPG(Ser21-Pro500) 6×His tag

Purity: The purity of the protein is greater than 80% as determined by SDS-PAGE and Coomassie blue staining.

Formulation & Reconstitution: Lyophilized from nanodisc solubilization buffer (20 mM Tris-HCl, 150 mM NaCl, pH 8.0). Normally 5% – 8% trehalose is added as protectants before lyophilization.

Storage & Shipping: Store at -20°C to -80°C for 12 months in lyophilized form. After reconstitution, if not intended for use within a month, aliquot and store at -80°C (Avoid repeated freezing and thawing). Lyophilized proteins are shipped at ambient temperature.

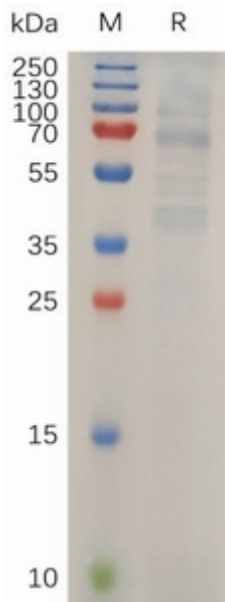


Figure 1. Human LIPG Protein, His Tag on SDS-PAGE under reducing condition.