

HUMAN LONGIGF-II PROTEIN

Cat.#: 12068

Product Name: Human LongIGF-II Protein

Size: 10 µg, 50 µg and 100 µg

Synonyms: Insulin-Like Growth Factor II;IGF-II;Somatomedin-A;IGF2;PP1446

Target: LongIGF-II

UNIPROT ID: P01344

Description: Recombinant Human Long Insulin-Like Growth Factor II is produced by our E.coli expression system and the target gene encoding Ala25-Glu91 is expressed.

Background: Insulin-Like Growth Factor II (IGF2) belongs to the insulin family of polypeptide growth factors that is involved in development and growth. Members of this family are structurally homologous to proinsulin, and share higher sequence identity. IGF2 is expressed only from the paternally inherited allele and believed to be secreted by the liver and to circulate in the blood. IGF2 possess growth-promoting activity and can stimulate the proliferation and survival of various cell types including muscle, bone, and cartilage tissue in vitro. IGF2 is influenced by placental lactogen and may play a role in fetal development.

Species/Host: E.coli

Molecular Weight: 8.91 KDa

Molecular Characterization: Not available

Purity: Greater than 95% as determined by reducing SDS-PAGE.

Formulation & Reconstitution: Lyophilized from nanodisc solubilization buffer (20 mM Tris-HCl, 150 mM NaCl, pH 8.0). Normally 5% – 8% trehalose is added as protectants before lyophilization.

Storage & Shipping: Store at -20°C to -80°C for 12 months in lyophilized form. After reconstitution, if not intended for use within a month, aliquot and store at -80°C (Avoid repeated freezing and thawing). Lyophilized proteins are shipped at ambient temperature.

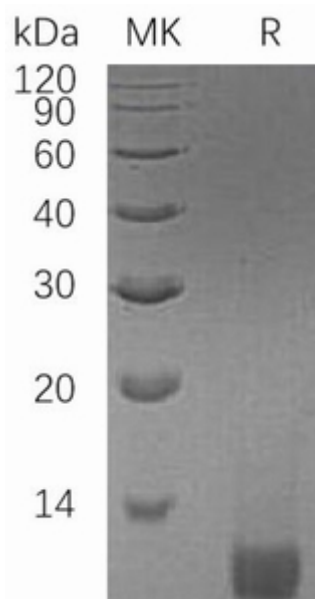


Figure 1. Greater than 95% as determined by reducing SDS-PAGE.