

## HUMAN LRP6 PROTEIN, HIS TAG

**Cat.#:** 11853

**Product Name:** Human LRP6 Protein

**Size:** 10 µg, 50 µg and 100 µg

**Synonyms:** ADCAD2;STHAG7

**Target:** LRP6

**UNIPROT ID:** O75581

**Description:** Recombinant Human LRP6 Protein with C-terminal 6xHis tag

**Background:** This gene encodes a member of the low density lipoprotein (LDL) receptor gene family. LDL receptors are transmembrane cell surface proteins involved in receptor-mediated endocytosis of lipoprotein and protein ligands. The protein encoded by this gene functions as a receptor or, with Frizzled, a co-receptor for Wnt and thereby transmits the canonical Wnt/beta-catenin signaling cascade. Through its interaction with the Wnt/beta-catenin signaling cascade this gene plays a role in the regulation of cell differentiation, proliferation, and migration and the development of many cancer types. This protein undergoes gamma-secretase dependent RIP- (regulated intramembrane proteolysis) processing but the precise locations of the cleavage sites have not been determined.[provided by RefSeq, Dec 2009]

**Species/Host:** HEK293

**Molecular Weight:** The protein has a predicted molecular mass of 153.1 kDa after removal of the signal peptide. The apparent molecular mass of LRP6-His is approximately 130-250 kDa due to glycosylation.

**Molecular Characterization:** LRP6(Ala20-Ala1370) 6xHis tag

**Purity:** The purity of the protein is greater than 85% as determined by SDS-PAGE and Coomassie blue staining.

**Formulation & Reconstitution:** Lyophilized from nanodisc solubilization buffer (20 mM Tris-HCl, 150 mM NaCl, pH 8.0). Normally 5% - 8% trehalose is added as protectants before lyophilization.

**Storage & Shipping:** Store at -20°C to -80°C for 12 months in lyophilized form. After reconstitution, if not intended for use within a month, aliquot and store at -80°C (Avoid repeated freezing and thawing). Lyophilized proteins are shipped at ambient temperature.

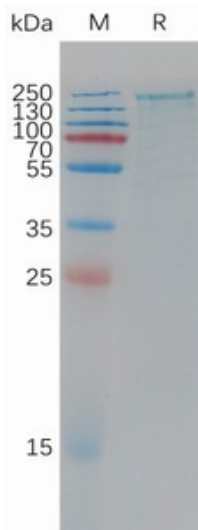


Figure 1. Human LRP6 Protein, His Tag on SDS-PAGE under reducing condition.

**Human LRP6, His Tagged protein ELISA**  
0.2  $\mu$ g of Human LRP6, His tagged protein per well

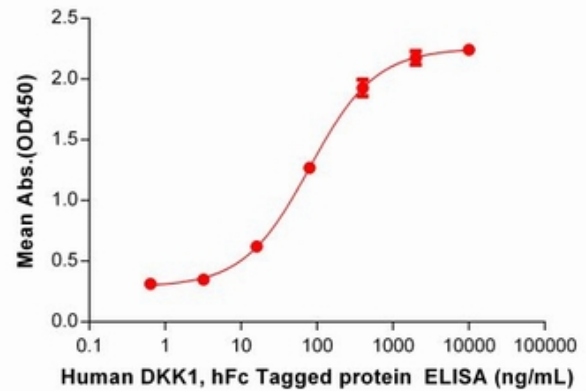


Figure 2. ELISA plate pre-coated by 5  $\mu$ g/ml (100  $\mu$ l/well) Human LRP6 Protein, His Tag (11853) can bind Human DKK1 Protein, hFc Tag(11248) in a linear range of 16-400ng/mL.