

HUMAN MELTF PROTEIN, HIS TAG

Cat.#: 11960

Product Name: Human MELTF Protein

Size: 10 µg, 50 µg and 100 µg

Synonyms: CD228;MAP97;MFI2;MTf;MTF1

Target: MELTF

UNIPROT ID: P08582

Description: Recombinant Human MELTF Protein with C-terminal 6XHis tag

Background: The protein encoded by this gene is a cell-surface glycoprotein found on melanoma cells. The protein shares sequence similarity and iron-binding properties with members of the transferrin superfamily. The importance of the iron binding function has not yet been identified. This gene resides in the same region of chromosome 3 as members of the transferrin superfamily. Alternative splicing results in two transcript variants. [provided by RefSeq, Jul 2008]

Species/Host: HEK293

Molecular Weight: The protein has a predicted molecular mass of 76.2 kDa after removal of the signal peptide. The apparent molecular mass of MELTF-His is approximately 70-100 kDa due to glycosylation.

Molecular Characterization: MELTF(Gly20-Gln708) 6×His tag

Purity: The purity of the protein is greater than 85% as determined by SDS-PAGE and Coomassie blue staining.

Formulation & Reconstitution: Lyophilized from nanodisc solubilization buffer (20 mM Tris-HCl, 150 mM NaCl, pH 8.0). Normally 5% – 8% trehalose is added as protectants before lyophilization.

Storage & Shipping: Store at -20°C to -80°C for 12 months in lyophilized form. After reconstitution, if not intended for use within a month, aliquot and store at -80°C (Avoid repeated freezing and thawing). Lyophilized proteins are shipped at ambient temperature.

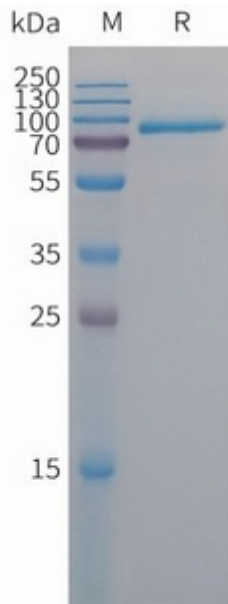


Figure 1. Human MELTF Protein, His Tag on SDS-PAGE under reducing condition.