

## HUMAN MESOTHELIN(37-286) PROTEIN, HIS TAG

**Cat.#:** 11514

**Product Name:** Human Mesothelin(37-286) Protein

**Size:** 10 µg, 50 µg and 100 µg

**Synonyms:** CAK1 antigen;Pre-pro-megakaryocyte-potentiating factor;MPF

**Target:** Mesothelin

**UNIPROT ID:** Q13421

**Description:** Recombinant human Mesothelin(37-286) protein with C-terminal 6xHis tag

**Background:** This gene encodes a preproprotein that is proteolytically processed to generate two protein products, megakaryocyte potentiating factor and mesothelin. Megakaryocyte potentiating factor functions as a cytokine that can stimulate colony formation of bone marrow megakaryocytes. Mesothelin is a glycosylphosphatidylinositol-anchored cell-surface protein that may function as a cell adhesion protein. This protein is overexpressed in epithelial mesotheliomas, ovarian cancers and in specific squamous cell carcinomas. Alternative splicing results in multiple transcript variants, at least one of which encodes an isoform that is proteolytically processed.

**Species/Host:** HEK293

**Molecular Weight:** The protein has a predicted molecular mass of 27.6 kDa after removal of the signal peptide. The apparent molecular mass of Mesothelin(37-286)-His is approximately 25-35 kDa due to glycosylation.

**Molecular Characterization:** Mesothelin(37-286)(Leu37-Arg286) 6×His tag

**Purity:** The purity of the protein is greater than 85% as determined by SDS-PAGE and Coomassie blue staining.

**Formulation & Reconstitution:** Lyophilized from nanodisc solubilization buffer (20 mM Tris-HCl, 150 mM NaCl, pH 8.0). Normally 5% – 8% trehalose is added as protectants before lyophilization.

**Storage & Shipping:** Store at -20°C to -80°C for 12 months in lyophilized form. After reconstitution, if not intended for use within a month, aliquot and store at -80°C (Avoid repeated freezing and thawing). Lyophilized proteins are shipped at ambient temperature.

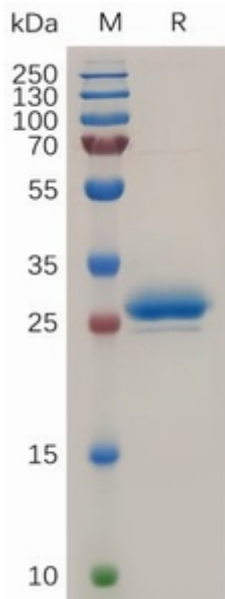


Figure 1. Human Mesothelin(37-286) Protein, His Tag on SDS-PAGE under reducing condition.