

**HUMAN MIF PROTEIN, hFc TAG****Cat.#:** 11264**Product Name:** Human MIF Protein**Size:** 10 µg, 50 µg and 100 µg**Synonyms:** GIF;GLIF;MMIF**Target:** MIF**UNIPROT ID:** P14174**Description:** Recombinant human MIF protein with C-terminal hFc tag**Background:** This gene encodes a lymphokine involved in cell-mediated immunity, immunoregulation, and inflammation. It plays a role in the regulation of macrophage function in host defense through the suppression of anti-inflammatory effects of glucocorticoids. This lymphokine and the JAB1 protein form a complex in the cytosol near the peripheral plasma membrane, which may indicate an additional role in integrin signaling pathways. [provided by RefSeq, Jul 2008]**Species/Host:** HEK293**Molecular Weight:** The protein has a predicted molecular mass of 38.5 kDa after removal of the signal peptide. The apparent molecular mass of MIF-hFc is approximately 35-55 kDa due to glycosylation.**Molecular Characterization:** MIF(Pro2-Ala115) hFc(Glu99-Ala330)**Purity:** The purity of the protein is greater than 95% as determined by SDS-PAGE and Coomassie blue staining.**Formulation & Reconstitution:** Lyophilized from nanodisc solubilization buffer (20 mM Tris-HCl, 150 mM NaCl, pH 8.0). Normally 5% – 8% trehalose is added as protectants before lyophilization.**Storage & Shipping:** Store at -20°C to -80°C for 12 months in lyophilized form. After reconstitution, if not intended for use within a month, aliquot and store at -80°C (Avoid repeated freezing and thawing). Lyophilized proteins are shipped at ambient temperature.

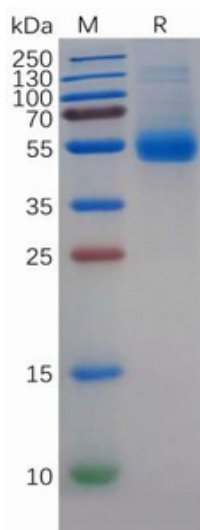


Figure 1. Human MIF Protein, hFc Tag on SDS-PAGE under reducing condition.

**Human MIF, hFc Tagged protein ELISA**  
0.2  $\mu$ g of Human MIF, hFc tagged protein per well

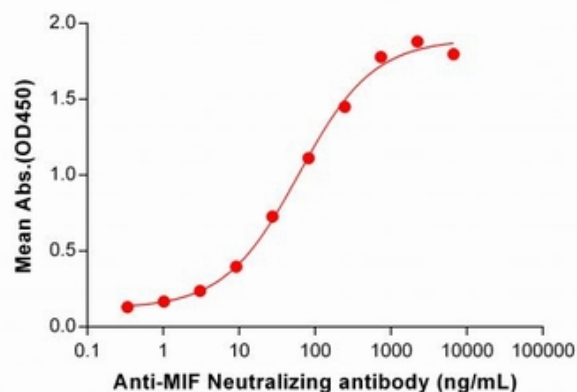


Figure 2. ELISA plate pre-coated by 2  $\mu$ g/ml (100  $\mu$ l/well) Human MIF Protein, hFc Tag (11264) can bind Anti-MIF Neutralizing antibody 28098 in a linear range of 3.05-740.74 ng/mL.