

HUMAN MESOTHELIN (296-580) PROTEIN, MFC-HIS TAG

Cat.#: 11159

Product Name: Human Mesothelin (296-580) Protein

Size: 10 µg, 50 µg and 100 µg

Synonyms: MSLN;Mesothelin;MPF

Target: Mesothelin

UNIPROT ID: Q13421

Description: Recombinant human Mesothelin(296-580) protein with C-terminal mouse Fc and 6xHis tag

Background: This gene encodes a preproprotein that is proteolytically processed to generate two protein products, megakaryocyte potentiating factor and mesothelin. Megakaryocyte potentiating factor functions as a cytokine that can stimulate colony formation of bone marrow megakaryocytes. Mesothelin is a glycosylphosphatidylinositol-anchored cell-surface protein that may function as a cell adhesion protein. This protein is overexpressed in epithelial mesotheliomas, ovarian cancers and in specific squamous cell carcinomas. Alternative splicing results in multiple transcript variants, at least one of which encodes an isoform that is proteolytically processed.

Species/Host: HEK293

Molecular Weight: The protein has a predicted molecular mass of 59.3 kDa after removal of the signal peptide.

Molecular Characterization: Mesothelin(Glu296-Gly580) mFc(Pro99-Lys330) 6×His tag

Purity: The purity of the protein is greater than 95% as determined by SDS-PAGE and Coomassie blue staining.

Formulation & Reconstitution: Lyophilized from nanodisc solubilization buffer (20 mM Tris-HCl, 150 mM NaCl, pH 8.0). Normally 5% – 8% trehalose is added as protectants before lyophilization.

Storage & Shipping: Store at -20°C to -80°C for 12 months in lyophilized form. After reconstitution, if not intended for use within a month, aliquot and store at -80°C (Avoid repeated freezing and thawing). Lyophilized proteins are shipped at ambient temperature.

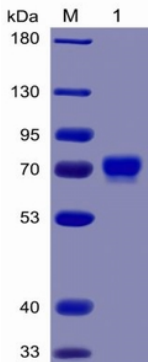


Figure 1. Human Mesothelin (296-580) Protein, mFc-His Tag on SDS-PAGE under reducing condition.

Human MSLN(296-580), mFc-His Tagged protein ELISA

0.2 µg of MSLN(296-580), mFc-His Tagged protein per well

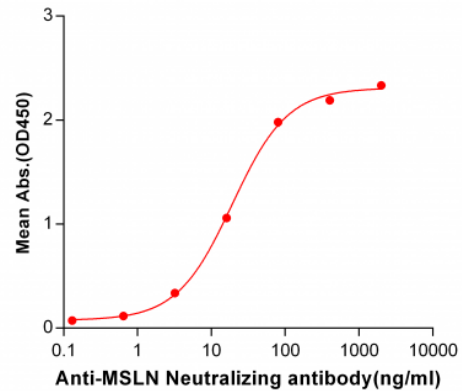


Figure 2. ELISA plate pre-coated by 2 µg/ml (100 µl/well) Human Mesothelin, mFc-His tagged protein (11159) can bind Anti-Mesothelin Neutralizing antibody 28030 in a linear range of 3.2-80.0 ng/ml.