

**HUMAN PCSK9 PROTEIN, HFC TAG****Cat.#:** 11363**Product Name:** Human PCSK9 Protein**Size:** 10 µg, 50 µg and 100 µg**Synonyms:** FH3;FHCL3;HCHOLA3;LDLCQ1;NARC-1;NARC1;PC9**Target:** PCSK9**UNIPROT ID:** Q8NBP7**Description:** Recombinant Human PCSK9 Protein with C-terminal human Fc tag**Background:** This gene encodes a member of the subtilisin-like proprotein convertase family, which includes proteases that process protein and peptide precursors trafficking through regulated or constitutive branches of the secretory pathway. The encoded protein undergoes an autocatalytic processing event with its prosegment in the ER and is constitutively secreted as an inactive protease into the extracellular matrix and trans-Golgi network. It is expressed in liver, intestine and kidney tissues and escorts specific receptors for lysosomal degradation. It plays a role in cholesterol and fatty acid metabolism. Mutations in this gene have been associated with autosomal dominant familial hypercholesterolemia. Alternative splicing results in multiple transcript variants.**Species/Host:** HEK293**Molecular Weight:** The protein has a predicted molecular mass of 97.2 kDa after removal of the signal peptide. The apparent molecular mass of PCSK9-hFc is approximately 100-130 kDa due to glycosylation.**Molecular Characterization:** PCSK9(Ser31-Gln692) hFc(Glu99-Ala330)**Purity:** The purity of the protein is greater than 95% as determined by SDS-PAGE and Coomassie blue staining.**Formulation & Reconstitution:** Lyophilized from nanodisc solubilization buffer (20 mM Tris-HCl, 150 mM NaCl, pH 8.0). Normally 5% – 8% trehalose is added as protectants before lyophilization.**Storage & Shipping:** Store at -20°C to -80°C for 12 months in lyophilized form. After reconstitution, if not intended for use within a month, aliquot and store at -80°C (Avoid repeated freezing and thawing). Lyophilized proteins are shipped at ambient temperature.

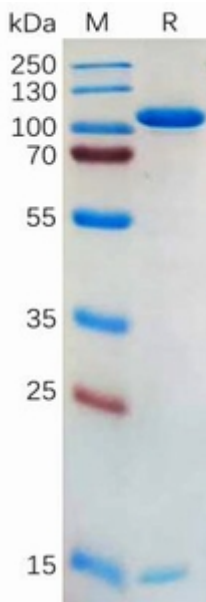


Figure 1. Human PCSK9 Protein, hFc Tag on SDS-PAGE under reducing condition.