

**HUMAN PLA2R1(21-521+1097-1246) PROTEIN****Cat.#:** 12236**Product Name:** Human PLA2R1(21-521+1097-1246) Protein**Size:** 10 µg, 50 µg and 100 µg**Synonyms:** CLEC13C;PLA2-R;PLA2G1R;PLA2IR;PLA2R**Target:** PLA2R1**UNIPROT ID:** Q13018**Description:** Recombinant Human PLA2R1(21-521 1097-1246) Protein with C-terminal 10xHis tag**Background:** This gene represents a phospholipase A2 receptor. The encoded protein likely exists as both a transmembrane form and a soluble form. The transmembrane receptor may play a role in clearance of phospholipase A2, thereby inhibiting its action. Polymorphisms at this locus have been associated with susceptibility to idiopathic membranous nephropathy. Alternatively spliced transcript variants encoding different isoforms have been identified.[provided by RefSeq, Sep 2010]**Species/Host:** HEK293**Molecular Weight:** The protein has a predicted molecular mass of 76.0 kDa after removal of the signal peptide. The apparent molecular mass of PLA2R1(21-521 1097-1246)-10×His is approximately 70-130 kDa due to glycosylation.**Molecular Characterization:** PLA2R1(Glu21-Arg521 Glu1097-Leu1246) 10×His tag**Purity:** The purity of the protein is greater than 85% as determined by SDS-PAGE and Coomassie blue staining.**Formulation & Reconstitution:** Lyophilized from nanodisc solubilization buffer (20 mM Tris-HCl, 150 mM NaCl, pH 8.0). Normally 5% – 8% trehalose is added as protectants before lyophilization.**Storage & Shipping:** Store at -20°C to -80°C for 12 months in lyophilized form. After reconstitution, if not intended for use within a month, aliquot and store at -80°C (Avoid repeated freezing and thawing). Lyophilized proteins are shipped at ambient temperature.

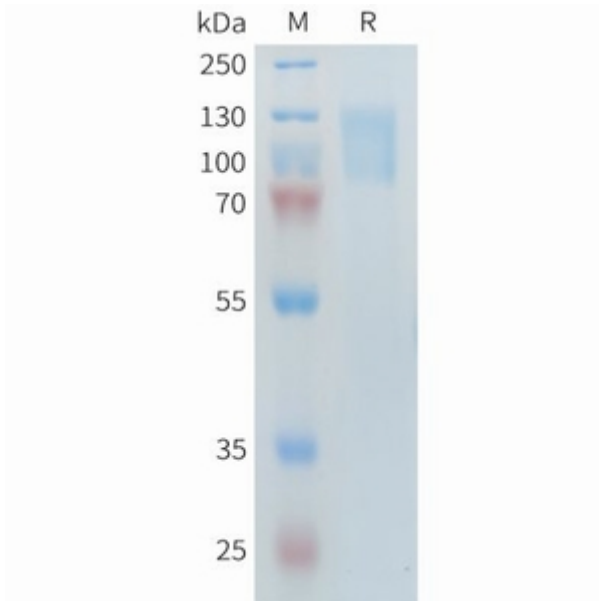


Figure 1. Human PLA2R1(21-521 1097-1246) Protein, His Tag on SDS-PAGE under reducing condition.