

HUMAN RSPO1(21-263) PROTEIN, HIS TAG

Cat.#: 11567

Product Name: Human RSPO1(21-263) Protein

Size: 10 µg, 50 µg and 100 µg

Synonyms: R-spondin-1;hRspo1

Target: RSPO1

UNIPROT ID: Q2MKA7

Description: Recombinant human RSPO1(21-263) protein with C-terminal 6xHis tag

Background: This gene encodes a secreted activator protein with two cysteine-rich, furin-like domains and one thrombospondin type 1 domain. The encoded protein is a ligand for leucine-rich repeat-containing G-protein coupled receptors (LGR proteins) and positively regulates the Wnt signaling pathway. In mice, the protein induces the rapid onset of crypt cell proliferation and increases intestinal epithelial healing, providing a protective effect against chemotherapy-induced adverse effects. Alternative splicing results in multiple transcript variants. [provided by RefSeq, Apr 2014]

Species/Host: HEK293

Molecular Weight: The protein has a predicted molecular mass of 27.6 kDa after removal of the signal peptide. The apparent molecular mass of RSPO1(21-263)-His is approximately 35-55 kDa due to glycosylation.

Molecular Characterization: RSPO1(21-263)(Ser21-Ala263) 6xHis tag

Purity: The purity of the protein is greater than 85% as determined by SDS-PAGE and Coomassie blue staining.

Formulation & Reconstitution: Lyophilized from nanodisc solubilization buffer (20 mM Tris-HCl, 150 mM NaCl, pH 8.0). Normally 5% – 8% trehalose is added as protectants before lyophilization.

Storage & Shipping: Store at -20°C to -80°C for 12 months in lyophilized form. After reconstitution, if not intended for use within a month, aliquot and store at -80°C (Avoid repeated freezing and thawing). Lyophilized proteins are shipped at ambient temperature.

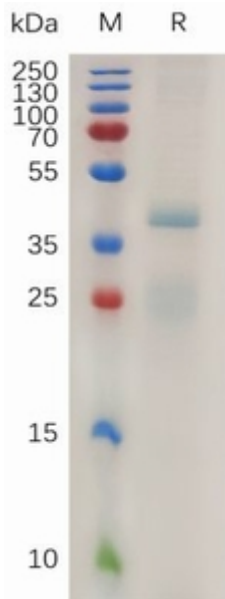


Figure 1. Human RSPO1(21-263) Protein, His Tag on SDS-PAGE under reducing condition.