

HUMAN SERPINF2 PROTEIN, HIS TAG

Cat.#: 11858

Product Name: Human SERPINF2 Protein

Size: 10 µg, 50 µg and 100 µg

Synonyms: A2AP;AAP;ALPHA-2-PI;alpha2AP;API;PLI

Target: SERPINF2

UNIPROT ID: P08697

Description: Recombinant Human SERPINF2 Protein with C-terminal 6xHis tag

Background: This gene encodes a member of the serpin family of serine protease inhibitors. The protein is a major inhibitor of plasmin, which degrades fibrin and various other proteins. Consequently, the proper function of this gene has a major role in regulating the blood clotting pathway. Mutations in this gene result in alpha-2-plasmin inhibitor deficiency, which is characterized by severe hemorrhagic diathesis. Multiple transcript variants encoding different isoforms have been found for this gene. [provided by RefSeq, Sep 2009]

Species/Host: HEK293

Molecular Weight: The protein has a predicted molecular mass of 52.5 kDa after removal of the signal peptide. The apparent molecular mass of SERPINF2-His is approximately 55–70 kDa due to glycosylation.

Molecular Characterization: SERPINF2(Met28-Lys491) 6×His tag

Purity: The purity of the protein is greater than 85% as determined by SDS-PAGE and Coomassie blue staining.

Formulation & Reconstitution: Lyophilized from nanodisc solubilization buffer (20 mM Tris-HCl, 150 mM NaCl, pH 8.0). Normally 5% – 8% trehalose is added as protectants before lyophilization.

Storage & Shipping: Store at -20°C to -80°C for 12 months in lyophilized form. After reconstitution, if not intended for use within a month, aliquot and store at -80°C (Avoid repeated freezing and thawing). Lyophilized proteins are shipped at ambient temperature.

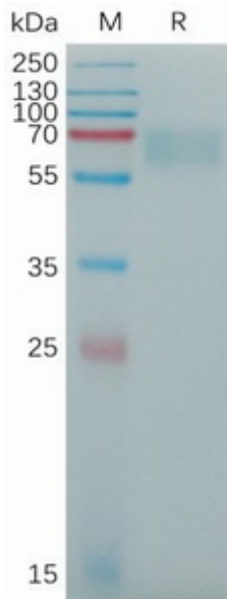


Figure 1. Human SERPINF2 Protein, His Tag on SDS-PAGE under reducing condition.