

HUMAN SIGLEC10 PROTEIN, HIS TAG**Cat.#:** 11211**Product Name:** Human SIGLEC10 Protein**Size:** 10 µg, 50 µg and 100 µg**Synonyms:** SIGLEC10;Siglec-10;SLG2;PRO940;MGC126774**Target:** SIGLEC10**UNIPROT ID:** Q96LC7**Description:** Recombinant Human SIGLEC10 protein with C-terminal 6xHis tag**Background:** SIGLECs are members of the immunoglobulin superfamily that are expressed on the cell surface. Most SIGLECs have 1 or more cytoplasmic immune receptor tyrosine-based inhibitory motifs, or ITIMs. SIGLECs are typically expressed on cells of the innate immune system, with the exception of the B-cell expressed SIGLEC6 (MIM 604405).**Species/Host:** HEK293**Molecular Weight:** The protein has a predicted molecular mass of 59.0 kDa after removal of the signal peptide. The apparent molecular mass of SIGLEC10-His is approximately 70-100 kDa due to glycosylation.**Molecular Characterization:** SIGLEC10(Met17-Thr546) 6×His tag**Purity:** The purity of the protein is greater than 95% as determined by SDS-PAGE and Coomassie blue staining.**Formulation & Reconstitution:** Lyophilized from nanodisc solubilization buffer (20 mM Tris-HCl, 150 mM NaCl, pH 8.0). Normally 5% – 8% trehalose is added as protectants before lyophilization.**Storage & Shipping:** Store at -20°C to -80°C for 12 months in lyophilized form. After reconstitution, if not intended for use within a month, aliquot and store at -80°C (Avoid repeated freezing and thawing). Lyophilized proteins are shipped at ambient temperature.

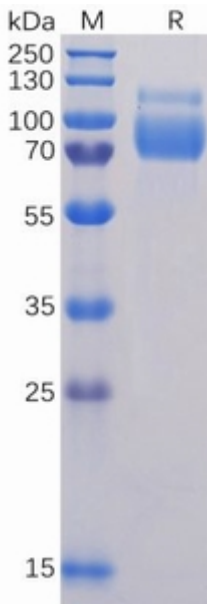


Figure 1. Human SIGLEC10 Protein, His Tag on SDS-PAGE under reducing condition.