

HUMAN SIGLEC15 PROTEIN, MFC-HIS TAG

Cat.#: 11268

Product Name: Human SIGLEC15 Protein

Size: 10 µg, 50 µg and 100 µg

Synonyms: CD33 antigen-like 3;IGLEC-15;D33L3;sialic acid-binding Ig-like lectin 15;iglec15;iglec-15

Target: SIGLEC15

UNIPROT ID: Q6ZMC9

Description: Recombinant human SIGLEC15 protein with C-terminal mouse Fc and 6xHis tag

Background: SIGLEC15 (Sialic Acid Binding Ig Like Lectin 15) is a Protein Coding gene. Diseases associated with SIGLEC15 include Osteoporosis, Juvenile Osteoporosis. Among its related pathways are Innate Immune System and RET signaling. An important paralog of this gene is SIGLEC1.

Species/Host: HEK293

Molecular Weight: The protein has a predicted molecular mass of 53.6 kDa after removal of the signal peptide. The apparent molecular mass of SIGLEC15-mFc-His is approximately 55-70 kDa due to glycosylation.

Molecular Characterization: SIGLEC15(Phe20-Thr263) mFc(Pro99-Lys330) 6xHis tag

Purity: The purity of the protein is greater than 95% as determined by SDS-PAGE and Coomassie blue staining.

Formulation & Reconstitution: Lyophilized from nanodisc solubilization buffer (20 mM Tris-HCl, 150 mM NaCl, pH 8.0). Normally 5% – 8% trehalose is added as protectants before lyophilization.

Storage & Shipping: Store at -20°C to -80°C for 12 months in lyophilized form. After reconstitution, if not intended for use within a month, aliquot and store at -80°C (Avoid repeated freezing and thawing). Lyophilized proteins are shipped at ambient temperature.

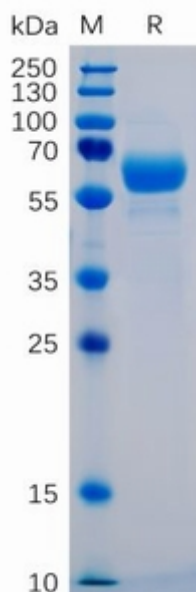


Figure 1. Human SIGLEC15 Protein, mFc-His Tag on SDS-PAGE under reducing condition.