

## HUMAN SLAMF1 PROTEIN, MFC-HIS TAG

**Cat.#:** 11152

**Product Name:** Human SLAMF1 Protein

**Size:** 10 µg, 50 µg and 100 µg

**Synonyms:** SLAMF1;CD150;CDw150;SLAM;IPO-3

**Target:** SLAMF1

**UNIPROT ID:** Q13291

**Description:** Recombinant human SLAMF1 protein with C-terminal mouse Fc and 6xHis tag

**Background:** SLAMF1 (Signaling Lymphocytic Activation Molecule Family Member 1) is a Protein Coding gene. Diseases associated with SLAMF1 include Measles and Subacute Sclerosing Panencephalitis. Among its related pathways are Dendritic Cells Developmental Lineage Pathway and T Cell Co-Signaling Pathway: Ligand-Receptor Interactions. Gene Ontology (GO) annotations related to this gene include antigen binding. An important paralog of this gene is LY9.

**Species/Host:** HEK293

**Molecular Weight:** The protein has a predicted molecular mass of 51.8 kDa after removal of the signal peptide.

**Molecular Characterization:** SLAMF1(Ala21-Pro231) mFc(Pro99-Lys330) 6xHis tag

**Purity:** The purity of the protein is greater than 95% as determined by SDS-PAGE and Coomassie blue staining.

**Formulation & Reconstitution:** Lyophilized from nanodisc solubilization buffer (20 mM Tris-HCl, 150 mM NaCl, pH 8.0). Normally 5% – 8% trehalose is added as protectants before lyophilization.

**Storage & Shipping:** Store at -20°C to -80°C for 12 months in lyophilized form. After reconstitution, if not intended for use within a month, aliquot and store at -80°C (Avoid repeated freezing and thawing). Lyophilized proteins are shipped at ambient temperature.

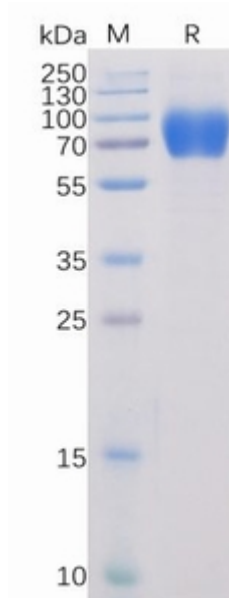


Figure 1. Human SLAMF1 Protein, mFc-His Tag on SDS-PAGE under reducing condition.

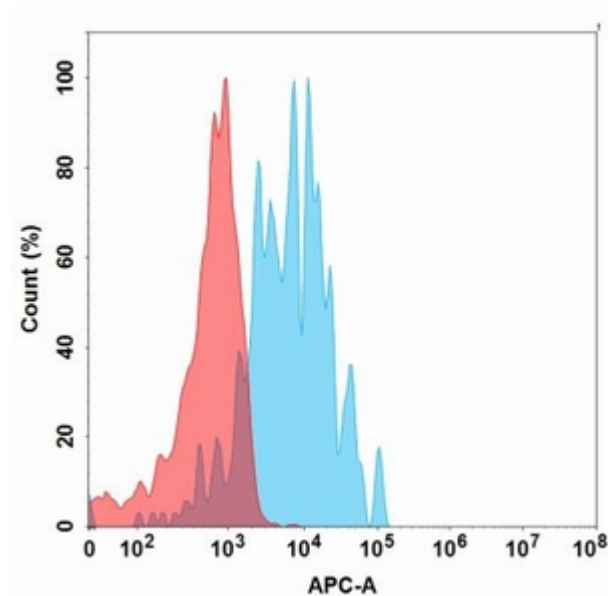


Figure 2. Flow cytometry analysis with 15  $\mu\text{g/ml}$  Human SLAMF1 Protein, mFc-His Tag (11152) on Expi293 cells transfected with Human SLAMF1 protein (Blue histogram) or Expi293 transfected with irrelevant protein (Red histogram).