

HUMAN SLAMF8 PROTEIN, HIS TAG

Cat.#: 11867

Product Name: Human SLAMF8 Protein

Size: 10 µg, 50 µg and 100 µg

Synonyms: BLAME;CD353;SBBI42

Target: SLAMF8

UNIPROT ID: Q9P0V8

Description: Recombinant Human SLAMF8 Protein with C-terminal 6xHis tag

Background: This gene encodes a member of the CD2 family of cell surface proteins involved in lymphocyte activation. These proteins are characterized by Ig domains. This protein is expressed in lymphoid tissues, and studies of a similar protein in mouse suggest that it may function during B cell lineage commitment. The gene is found in a region of chromosome 1 containing many CD2 genes. [provided by RefSeq, Jul 2008]

Species/Host: HEK293

Molecular Weight: The protein has a predicted molecular mass of 24.2 kDa after removal of the signal peptide. The apparent molecular mass of SLAMF8-His is approximately 25-35 kDa due to glycosylation.

Molecular Characterization: SLAMF8(Ala23-Asp233) 6xHis tag

Purity: The purity of the protein is greater than 85% as determined by SDS-PAGE and Coomassie blue staining.

Formulation & Reconstitution: Lyophilized from nanodisc solubilization buffer (20 mM Tris-HCl, 150 mM NaCl, pH 8.0). Normally 5% – 8% trehalose is added as protectants before lyophilization.

Storage & Shipping: Store at -20°C to -80°C for 12 months in lyophilized form. After reconstitution, if not intended for use within a month, aliquot and store at -80°C (Avoid repeated freezing and thawing). Lyophilized proteins are shipped at ambient temperature.

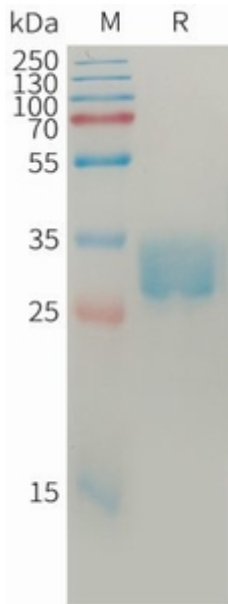


Figure 1. Human SLAMF8 Protein, His Tag on SDS-PAGE under reducing condition.