

HUMAN TIGIT PROTEIN, HFC TAG

Cat.#: 11225

Product Name: Human TIGIT Protein

Size: 10 µg, 50 µg and 100 µg

Synonyms: TIGIT;SIG9;STM3

Target: TIGIT

UNIPROT ID: Q495A1

Description: Recombinant human TIGIT Protein with C-terminal human Fc tag

Background: This gene encodes a member of the PVR (poliovirus receptor) family of immunoglobulin proteins. The product of this gene is expressed on several classes of T cells including follicular B helper T cells (TFH). The protein has been shown to bind PVR with high affinity, this binding is thought to assist interactions between TFH and dendritic cells to regulate T cell dependent B cell responses.

Species/Host: HEK293

Molecular Weight: The protein has a predicted molecular mass of 39.13 kDa after removal of the signal peptide. The apparent molecular mass of TIGIT-hFc is approximately 40–53 kDa due to glycosylation.

Molecular Characterization: TIGIT(Met22–Pro141) hFc(Glu99–Ala330)

Purity: The purity of the protein is greater than 95% as determined by SDS-PAGE and Coomassie blue staining.

Formulation & Reconstitution: Lyophilized from nanodisc solubilization buffer (20 mM Tris-HCl, 150 mM NaCl, pH 8.0). Normally 5% – 8% trehalose is added as protectants before lyophilization.

Storage & Shipping: Store at –20°C to –80°C for 12 months in lyophilized form. After reconstitution, if not intended for use within a month, aliquot and store at –80°C (Avoid repeated freezing and thawing). Lyophilized proteins are shipped at ambient temperature.

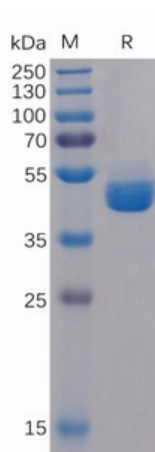


Figure 1. Human TIGIT Protein, hFc Tag on SDS-PAGE under reducing condition.

Human TIGIT, hFc Tagged protein ELISA

0.2 μ g of TIGIT, hFc Tagged protein per well

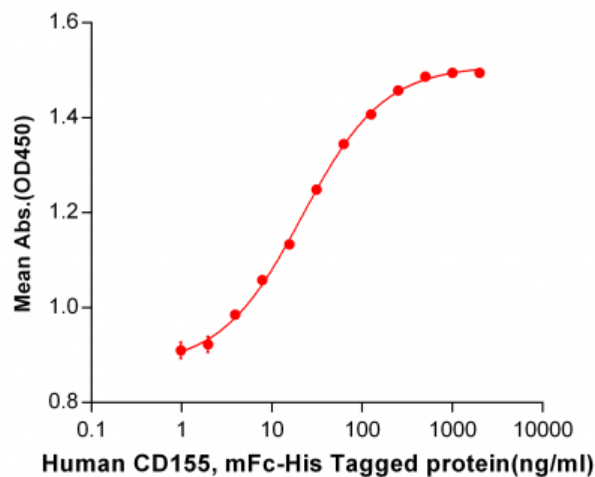


Figure 2. ELISA plate pre-coated by 2 μ g/ml (100 μ l/well) Human CD155, mFc-His tagged protein 11155 can bind Human TIGIT, hFc tagged protein (11225) in a linear range of 1.95-125 ng/ml.

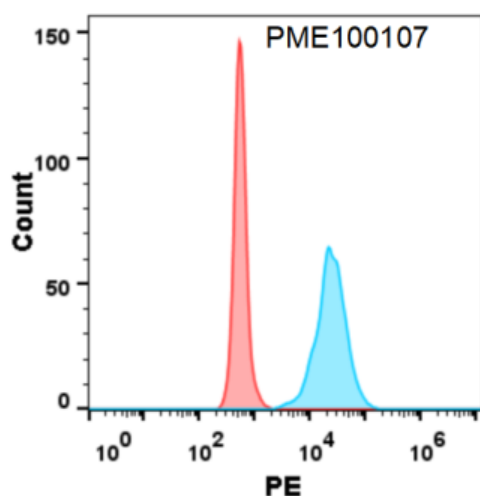


Figure 3. Flow cytometry analysis with 1 μ g/ml Human TIGIT Protein, hFc tag (11225) on Expi293 cells transfected with human CD112 (Blue histogram) or Expi293 transfected with irrelevant protein (Red histogram).