

## HUMAN TIGIT PROTEIN, MFC TAG

**Cat.#:** 11308

**Product Name:** Human TIGIT Protein

**Size:** 10 µg, 50 µg and 100 µg

**Synonyms:** TIGIT;SIG9;STM3

**Target:** TIGIT

**UNIPROT ID:** Q495A1

**Description:** Recombinant human TIGIT Protein with C-terminal mouse Fc tag

**Background:** This gene encodes a member of the PVR (poliovirus receptor) family of immunoglobulin proteins. The product of this gene is expressed on several classes of T cells including follicular B helper T cells (TFH). The protein has been shown to bind PVR with high affinity, this binding is thought to assist interactions between TFH and dendritic cells to regulate T cell dependent B cell responses.

**Species/Host:** HEK293

**Molecular Weight:** The protein has a predicted molecular mass of 39.24 kDa after removal of the signal peptide. The apparent molecular mass of TIGIT-mFc is approximately 40-53 kDa due to glycosylation.

**Molecular Characterization:** TIGIT(Met22-Pro141) mFc(Pro99-Lys330)

**Purity:** The purity of the protein is greater than 95% as determined by SDS-PAGE and Coomassie blue staining.

**Formulation & Reconstitution:** Lyophilized from nanodisc solubilization buffer (20 mM Tris-HCl, 150 mM NaCl, pH 8.0). Normally 5% – 8% trehalose is added as protectants before lyophilization.

**Storage & Shipping:** Store at -20°C to -80°C for 12 months in lyophilized form. After reconstitution, if not intended for use within a month, aliquot and store at -80°C (Avoid repeated freezing and thawing). Lyophilized proteins are shipped at ambient temperature.

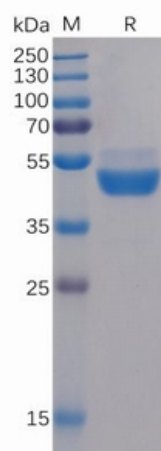


Figure 1. Human TIGIT Protein, mFc Tag on SDS-PAGE under reducing condition.

### Human TIGIT, mFc Tagged protein ELISA

0.2 µg of TIGIT, mFc Tagged protein per well

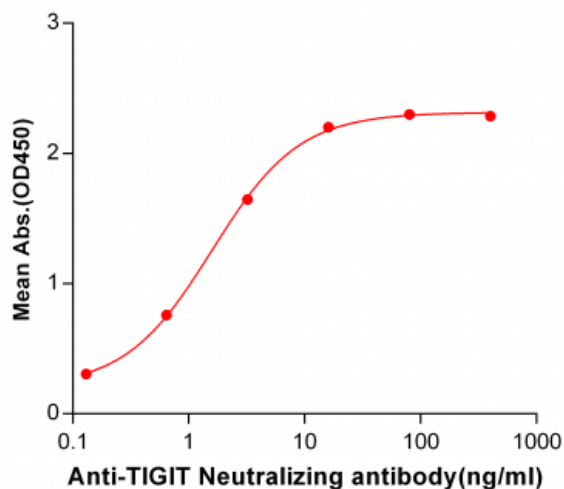


Figure 2. ELISA plate pre-coated by 2 µg/ml (100 µl/well) Human TIGIT, mFc tagged protein (11308) can bind Anti-TIGIT Neutralizing antibody 28033 in a linear range of 0.13-16.0 ng/ml.



# Product Description

Pioneering GTPase and Oncogene Product Development since 2010

---