

HUMAN TIM3 PROTEIN, MFC-HIS TAG

Cat.#: 11158

Product Name: Human TIM3 Protein

Size: 10 µg, 50 µg and 100 µg

Synonyms: HAVCR2;TIM3;TIMD3;FLJ14428;KIM3

Target: TIM3

UNIPROT ID: Q8TDQ0

Description: Recombinant human TIM3 protein with C-terminal mouse Fc and 6xHis tag

Background: The protein encoded by this gene belongs to the immunoglobulin superfamily, and TIM family of proteins. CD4-positive T helper lymphocytes can be divided into types 1 (Th1) and 2 (Th2) on the basis of their cytokine secretion patterns. Th1 cells are involved in cell-mediated immunity to intracellular pathogens and delayed-type hypersensitivity reactions, whereas, Th2 cells are involved in the control of extracellular helminthic infections and the promotion of atopic and allergic diseases. This protein is a Th1-specific cell surface protein that regulates macrophage activation, and inhibits Th1-mediated auto- and alloimmune responses, and promotes immunological tolerance.

Species/Host: HEK293

Molecular Weight: The protein has a predicted molecular mass of 47.5 kDa after removal of the signal peptide.

Molecular Characterization: TIM3(Ser22-Gly202) mFc(Pro99-Lys330) 6×His tag

Purity: The purity of the protein is greater than 95% as determined by SDS-PAGE and Coomassie blue staining.

Formulation & Reconstitution: Lyophilized from nanodisc solubilization buffer (20 mM Tris-HCl, 150 mM NaCl, pH 8.0). Normally 5% – 8% trehalose is added as protectants before lyophilization.

Storage & Shipping: Store at -20°C to -80°C for 12 months in lyophilized form. After reconstitution, if not intended for use within a month, aliquot and store at -80°C (Avoid repeated freezing and thawing). Lyophilized proteins are shipped at ambient temperature.

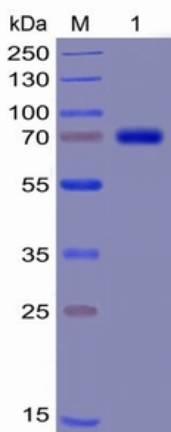


Figure 1. Human TIM3 Protein, mFc-His Tag on SDS-PAGE under reducing condition.

Human TIM3, mFc-His Tagged protein ELISA

0.2 µg of Human TIM3, mFc-His Tagged protein per well

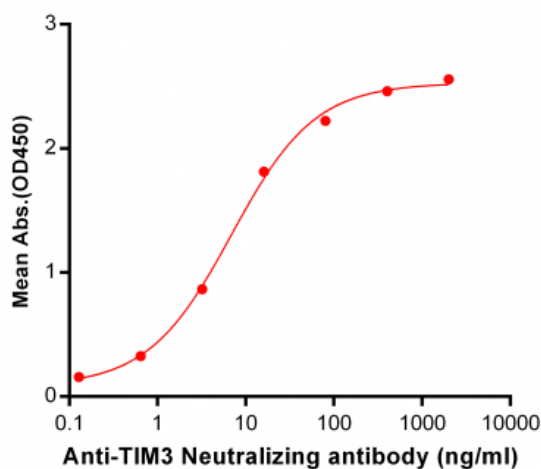


Figure 2. ELISA plate pre-coated by 2 µg/ml (100 µl/well) Human TIM3, mFc-His tagged protein (11158) can bind Anti-TIM3 Neutralizing antibody 28017 in a linear range of 0.64-80 ng/ml.



Product Description

Pioneering GTPase and Oncogene Product Development since 2010
