

## HVEM (DM131) RABBIT MAB

**Cat.#:** 28476

**Product Name:** Anti-HVEM(DM131) Rabbit Monoclonal Antibody

**Synonyms:** ATAR; CD270; HVEA; HVEM; LIGHTR; TR2

**Description:** Anti-HVEM antibody(DM131) Rabbit Monoclonal Antibody

**Background:** This gene encodes a member of the TNF (tumor necrosis factor) receptor superfamily. The encoded protein functions in signal transduction pathways that activate inflammatory and inhibitory T-cell immune response. It binds herpes simplex virus (HSV) viral envelope glycoprotein D (gD); mediating its entry into cells. Alternative splicing results in multiple transcript variants.

**Applications:** ELISA; Flow Cyt

**Recommended Dilutions:** ELISA 1:5000-10000; Flow Cyt 1:100

**Host Species:** Rabbit

**Isotype:** Rabbit IgG

**Purification:** Purified from cell culture supernatant by affinity chromatography

**Species Reactivity:** Human HVEM

**Constituents:** Lyophilized from sterile PBS, pH 7.4. 5 % – 8 % trehalose is added as protectants before lyophilization.

**Storage & Shipping:** Store at -20°C to -80°C for 12 months in lyophilized form. After reconstitution, if not intended for use within a month, aliquot and store at -80°C (Avoid repeated freezing and thawing).

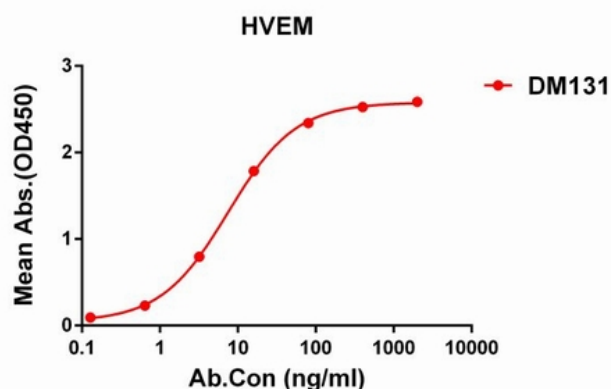


Figure 1. ELISA plate pre-coated by 1 µg/ml (100 µl/well) Human HVEM protein, His tagged protein 11253 can bind Rabbit anti-HVEM monoclonal antibody (clone: DM131) in a linear range of 0.1-12 ng/ml.

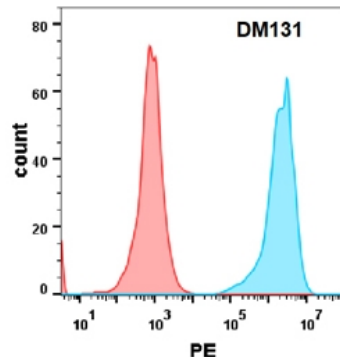


Figure 2. Flow cytometry analysis with Anti-HVEM (DM131) on Expi293 cells transfected with human HVEM (Blue histogram) or Expi293 transfected with irrelevant protein (Red histogram).