

## BAFFR MAB (IANALUMAB)

**Cat.#:** 28054

**Product Name:** Anti-BAFFR (ianalumab) Monoclonal Antibody

**Synonyms:** BAFFR;NFRSF13C;AFF-R;ROMIX;D268;VID4;rolixin

**Description:** Anti-BAFFR (ianalumab) Monoclonal Antibody

**Background:** Research grade biosimilar. Not for use in therapeutic or diagnostic procedures for humans or animals.

**Applications:** ELISA; Flow Cyt

**Recommended Dilutions:** ELISA 1:5000-10000; Flow Cyt 1:100

**Host Species:** Homo sapiens

**Isotype:** IgG1

**Purification:** Purified from cell culture supernatant by affinity chromatography

**Species Reactivity:** Human BAFF-R

**Constituents:** Lyophilized from sterile PBS, pH 7.4. 5% – 8% trehalose is added as protectants before lyophilization.

**Storage & Shipping:** Store at -20°C to -80°C for 12 months in lyophilized form. After reconstitution, if not intended for use within a month, aliquot and store at -80°C (Avoid repeated freezing and thawing).

### Anti-BAFFR (ianalumab biosimilar) mAb ELISA

0.2 µg of Human BAFFR, mFc Tagged protein per well

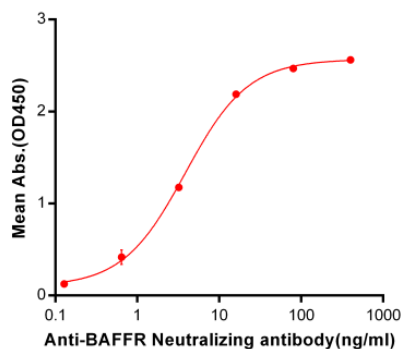


Figure 1. ELISA plate pre-coated by 2 µg/ml (100 µl/well) Human BAFFR, mFc tagged protein 11170 can bind Anti-BAFFR Neutralizing antibody (28054) in a linear range of 0.64-16 ng/ml.

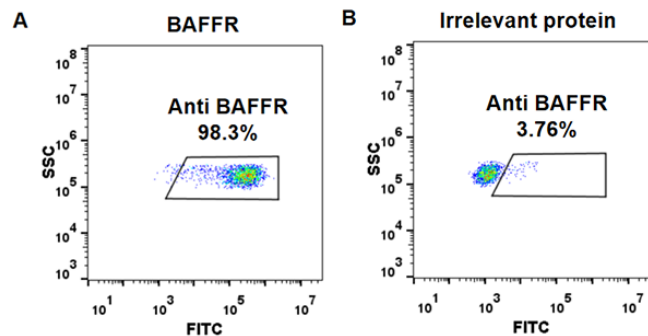


Figure 2. HEK293 cell line transfected with irrelevant protein (B) and human BAFFR (A) were surface stained with Anti-BAFFR mAb 1 µg/ml (ianalumab) followed by Alexa 488-conjugated anti-human IgG secondary antibody.