

FLT1 MAB (ICRUCUMAB)

Cat.#: 28126

Product Name: Anti-FLT1(Icrucumab) Monoclonal Antibody

Synonyms: FLT;FLT-1;VEGFR-1;VEGFR1

Description: Anti-FLT1(icrucumab) Monoclonal Antibody

Background: Research grade biosimilar. Not for use in therapeutic or diagnostic procedures for humans or animals.

Applications: ELISA; Flow Cyt

Recommended Dilutions: ELISA 1:5000-10000; Flow Cyt 1:100

Host Species: Homo sapiens

Isotype: IgG1

Purification: Purified from cell culture supernatant by affinity chromatography

Species Reactivity: Human FLT1

Constituents: Lyophilized from sterile PBS, pH 7.4. 5 % – 8% trehalose is added as protectants before lyophilization.

Storage & Shipping: Store at -20°C to -80°C for 12 months in lyophilized form. After reconstitution, if not intended for use within a month, aliquot and store at -80°C (Avoid repeated freezing and thawing).

Anti-FLT1 (icrucumab biosimilar) mAb ELISA

0.2 µg of Human FLT1, His tagged protein per well

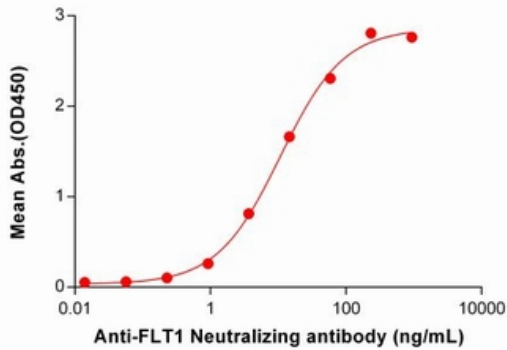


Figure 1. ELISA plate pre-coated by 2 µg/mL (100 µl/well) Human FLT1 Protein, His Tag 11516 can bind Anti-FLT1 Neutralizing antibody (28126) in a linear range of 0.92-234.38 ng/mL.

Anti-FLT1 (icrucumab biosimilar) mAb ELISA

0.2 µg of Human FLT1, hFc tagged protein per well

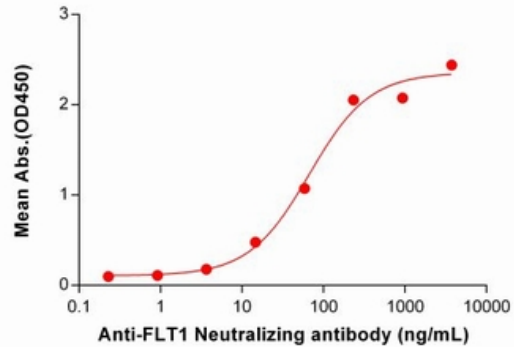


Figure 2. ELISA plate pre-coated by 2 µg/mL (100 µl/well) Human FLT1 Protein, hFc Tag (11725) can bind Anti-FLT1 Neutralizing antibody (28126) in a linear range of 3.66-234.38 ng/mL. In order to specifically detect 28126, mouse anti-human Fab-specific antibody was used as detection antibody.

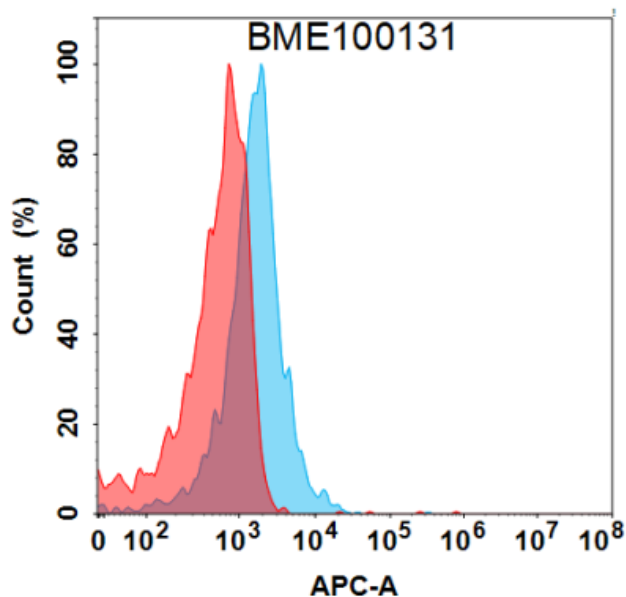


Figure 3. Flow cytometry analysis with 1 µg/mL Anti-FLT1 (icrucumab biosimilar) mAb (28126) on Expi293 cells transfected with Human FLT1 protein (Blue histogram) or Expi293 transfected with irrelevant protein (Red histogram).