

## EPHA3 MAB (IFABOTUZUMAB)

**Cat.#:** 28028

**Product Name:** Anti-EPHA3 (Ifabotuzumab) Monoclonal Antibody

**Synonyms:** TYRO4;HEK4;ETK1;ETK;EK4;HEK

**Description:** Anti-EPHA3 (ifabotuzumab) Monoclonal Antibody

**Background:** Research grade biosimilar. Not for use in therapeutic or diagnostic procedures for humans or animals.

**Applications:** ELISA; Flow Cyt

**Recommended Dilutions:** ELISA 1:5000-10000; Flow Cyt 1:100

**Host Species:** Humanized

**Isotype:** IgG1

**Purification:** Purified from cell culture supernatant by affinity chromatography

**Species Reactivity:** Human EPHA3

**Constituents:** Lyophilized from sterile PBS, pH 7.4. 5 % – 8% trehalose is added as protectants before lyophilization.

**Storage & Shipping:** Store at -20°C to -80°C for 12 months in lyophilized form. After reconstitution, if not intended for use within a month, aliquot and store at -80°C (Avoid repeated freezing and thawing).

### Anti-EPHA3 (ifabotuzumab biosimilar) mAb ELISA

0.2 µg of EPHA3, mFc-His Tagged protein per well

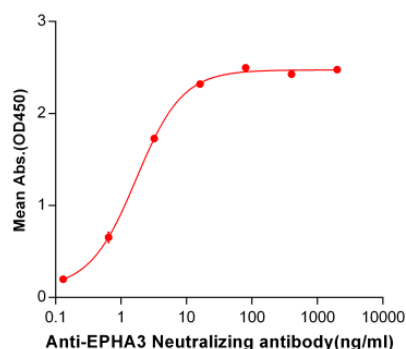


Figure 1. ELISA plate pre-coated by 2 µg/ml (100 µl/well) Human EPHA3, mFc-His tagged protein 11171 can bind Anti-EPHA3 Neutralizing antibody in a linear range of 0.13-16.0 ng/ml.

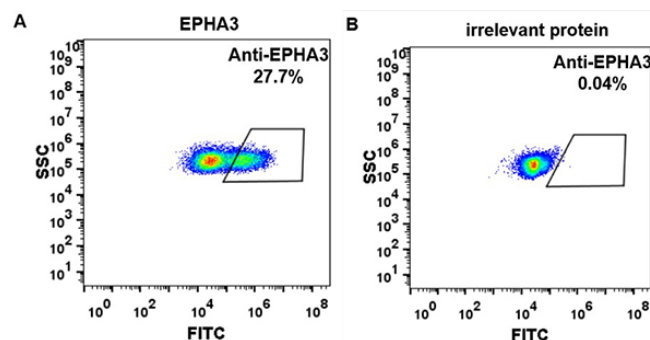


Figure 2. HEK293 cell line transfected with irrelevant protein (B) and human EPHA3 protein (A) were surface stained with anti-EPHA3 neutralizing antibody 1 µg/ml (ifabotuzumab) followed by Alexa 488-conjugated anti-human IgG secondary antibody.