

## IFNAR1 (DMC221) IGG1 CHIMERIC MAB

**Cat.#:** 28170

**Product Name:** Anti-IFNAR1(DMC221) IgG1 Chimeric Monoclonal Antibody

**Synonyms:** Interferon alpha:beta receptor 1;IFN-R-1;IFN-alpha:beta receptor 1;CRF2-1;Type I interferon receptor 1

**Description:** Anti-IFNAR1 antibody(DMC221) IgG1 Chimeric Monoclonal Antibody

**Background:** The protein encoded by this gene is a type I membrane protein that forms one of the two chains of a receptor for interferons alpha and beta. Binding and activation of the receptor stimulates Janus protein kinases; which in turn phosphorylate several proteins; including STAT1 and STAT2. The protein belongs to the type II cytokine receptor family and functions as an antiviral factor.

**Applications:** ELISA; Flow Cyt

**Recommended Dilutions:** ELISA 1:5000-10000; Flow Cyt 1:100

**Host Species:** Rabbit

**Isotype:** Rabbit:Human Fc chimeric IgG1

**Purification:** Purified from cell culture supernatant by affinity chromatography

**Species Reactivity:** Human IFNAR1

**Constituents:** Lyophilized from sterile PBS, pH 7.4. 5 % – 8% trehalose is added as protectants before lyophilization.

**Storage & Shipping:** Store at -20°C to -80°C for 12 months in lyophilized form. After reconstitution, if not intended for use within a month, aliquot and store at -80°C (Avoid repeated freezing and thawing).

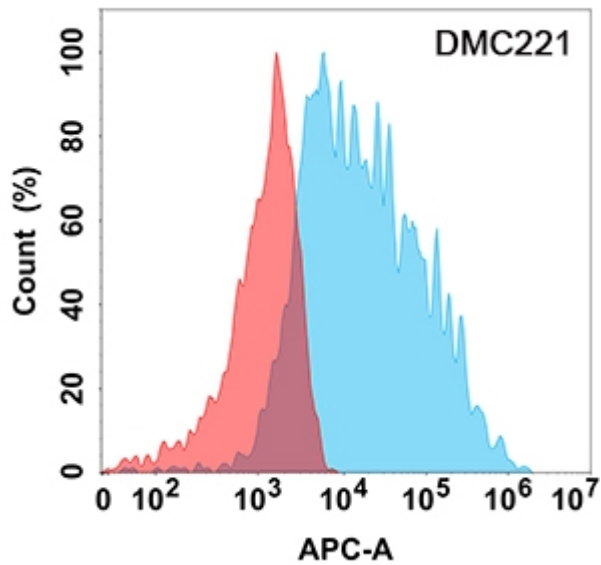


Figure 1. Flow cytometry analysis with Anti-IFNAR1 (DMC221) on Expi293 cells transfected with human IFNAR1 (Blue histogram) or Expi293 transfected with irrelevant protein (Red histogram).