

IGF1R (DMC684) IGG1 CHIMERIC MAB

Cat.#: 28282

Product Name: Anti-IGF1R(DMC684) IgG1 Chimeric Monoclonal Antibody

Synonyms: CD221; IGF1R; IGF1; JTK13

Description: Anti-IGF1R antibody(DMC684) IgG1 Chimeric Monoclonal Antibody

Background: This receptor binds insulin-like growth factor with a high affinity. It has tyrosine kinase activity. The insulin-like growth factor I receptor plays a critical role in transformation events. Cleavage of the precursor generates alpha and beta subunits. It is highly overexpressed in most malignant tissues where it functions as an anti-apoptotic agent by enhancing cell survival. Alternatively spliced transcript variants encoding distinct isoforms have been found for this gene. [provided by RefSeq; May 2014]

Applications: Flow Cyt

Recommended Dilutions: Flow Cyt 1:100

Host Species: Rabbit

Isotype: Rabbit:Human Fc chimeric IgG1

Purification: Purified from cell culture supernatant by affinity chromatography

Species Reactivity: Human IGF1R

Constituents: Lyophilized from sterile PBS, pH 7.4. 5 % – 8% trehalose is added as protectants before lyophilization.

Storage & Shipping: Store at -20°C to -80°C for 12 months in lyophilized form. After reconstitution, if not intended for use within a month, aliquot and store at -80°C (Avoid repeated freezing and thawing).

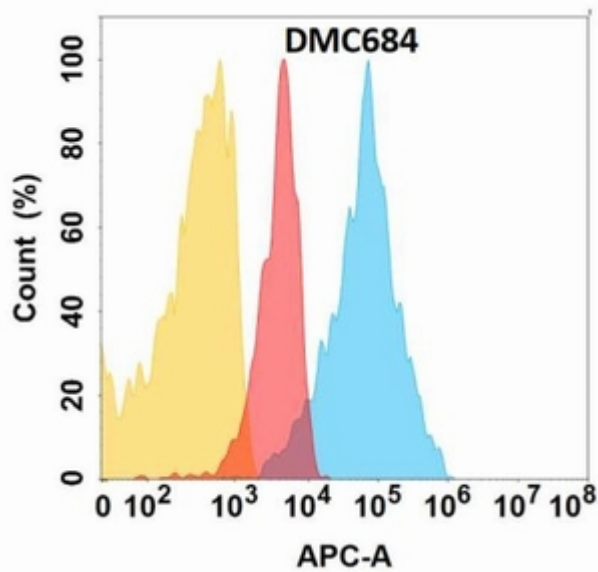


Figure 1. IGF1R protein is highly expressed on the surface of Expi293 cell membrane. Flow cytometry analysis with Anti-IGF1R (DMC684) on Expi293 cells transfected with human IGF1R (Blue histogram) or Expi293 transfected with irrelevant protein (Red histogram), and Isotype antibody on Expi293 transfected with irrelevant protein (Orange histogram).