

**IGFBP7 (DMC422) IGG1 CHIMERIC MAB****Cat.#:** 28216**Product Name:** Anti-IGFBP7(DMC422) IgG1 Chimeric Monoclonal Antibody**Synonyms:** IBP-7; TAF; IGFBP-rP1; MAC25 protein**Description:** Anti-IGFBP7 antibody(DMC422) IgG1 Chimeric Monoclonal Antibody**Background:** This gene encodes a member of the insulin-like growth factor (IGF)-binding protein (IGFBP) family. IGFBPs bind IGFs with high affinity; and regulate IGF availability in body fluids and tissues and modulate IGF binding to its receptors. This protein binds IGF-I and IGF-II with relatively low affinity; and belongs to a subfamily of low-affinity IGFBPs. It also stimulates prostacyclin production and cell adhesion. Alternatively spliced transcript variants encoding different isoforms have been described for this gene; and one variant has been associated with retinal arterial macroaneurysm (PMID:21835307).**Applications:** Flow Cyt**Recommended Dilutions:** Flow Cyt 1:100**Host Species:** Rabbit**Isotype:** Rabbit:Human Fc chimeric IgG1**Purification:** Purified from cell culture supernatant by affinity chromatography**Species Reactivity:** Human IGFBP7**Constituents:** Lyophilized from sterile PBS, pH 7.4. 5 % – 8% trehalose is added as protectants before lyophilization.**Storage & Shipping:** Store at -20°C to -80°C for 12 months in lyophilized form. After reconstitution, if not intended for use within a month, aliquot and store at -80°C (Avoid repeated freezing and thawing).

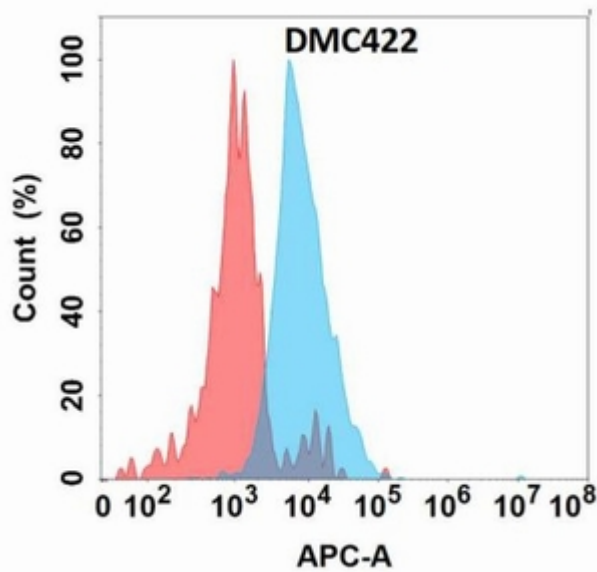


Figure 1. Flow cytometry analysis with Anti-IGFBP7 (DMC422) on Expi293 cells transfected with human IGFBP7 (Blue histogram) or Expi293 transfected with irrelevant protein (Red histogram).