

IL11RA (DMC282) IGG1 CHIMERIC MAB

Cat.#: 28190

Product Name: Anti-IL11RA(DMC282) IgG1 Chimeric Monoclonal Antibody

Synonyms: IL-11 R alpha;IL-11 RA;IL11RA;Interleukin-11 receptor subunit alpha;IL-11 receptor subunit alpha;IL-11R subunit alpha;IL-11R-alpha

Description: Anti-IL11RA antibody(DMC282) IgG1 Chimeric Monoclonal Antibody

Background: Interleukin 11 is a stromal cell-derived cytokine that belongs to a family of pleiotropic and redundant cytokines that use the gp130 transducing subunit in their high affinity receptors. This gene encodes the IL-11 receptor; which is a member of the hematopoietic cytokine receptor family. This particular receptor is very similar to ciliary neurotrophic factor; since both contain an extracellular region with a 2-domain structure composed of an immunoglobulin-like domain and a cytokine receptor-like domain. Multiple alternatively spliced transcript variants have been found for this gene.

Applications: Flow Cyt

Recommended Dilutions: Flow Cyt 1:100

Host Species: Rabbit

Isotype: Rabbit:Human Fc chimeric IgG1

Purification: Purified from cell culture supernatant by affinity chromatography

Species Reactivity: Human IL11RA

Constituents: Lyophilized from sterile PBS, pH 7.4. 5 % – 8% trehalose is added as protectants before lyophilization.

Storage & Shipping: Store at -20°C to -80°C for 12 months in lyophilized form. After reconstitution, if not intended for use within a month, aliquot and store at -80°C (Avoid repeated freezing and thawing).

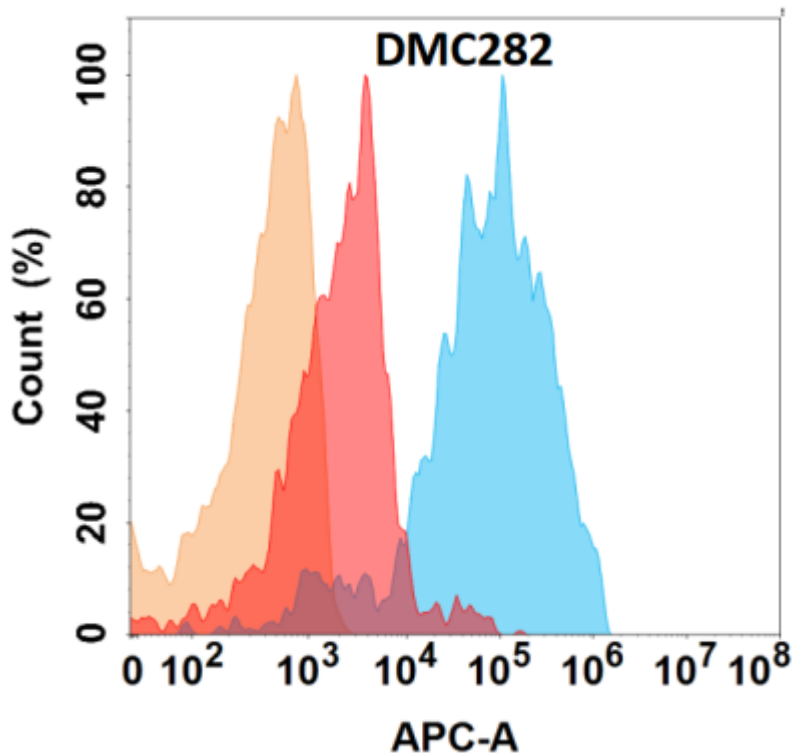


Figure 1. IL11RA protein is highly expressed on the surface of Expi293 cell membrane. Flow cytometry analysis with Anti-IL11RA (DMC282) on Expi293 cells transfected with human IL11RA (Blue histogram) or Expi293 transfected with irrelevant protein (Red histogram), and Isotype antibody on Expi293 transfected with irrelevant protein (Orange histogram).