

IL15RA (DM206) RABBIT MAB**Cat.#:** 28549**Product Name:** Anti-IL15RA(DM206) Rabbit Monoclonal Antibody**Synonyms:** CD215**Description:** Anti-IL15RA antibody(DM206) Rabbit Monoclonal Antibody

Background: This gene encodes a cytokine receptor that specifically binds interleukin 15 (IL15) with high affinity. The receptors of IL15 and IL2 share two subunits; IL2R beta and IL2R gamma. This forms the basis of many overlapping biological activities of IL15 and IL2. The protein encoded by this gene is structurally related to IL2R alpha; an additional IL2-specific alpha subunit necessary for high affinity IL2 binding. Unlike IL2RA; IL15RA is capable of binding IL15 with high affinity independent of other subunits; which suggests distinct roles between IL15 and IL2. This receptor is reported to enhance cell proliferation and expression of apoptosis inhibitor BCL2L1:BCL2-XL and BCL2. Multiple alternatively spliced transcript variants of this gene have been reported.

Applications: ELISA; Flow Cyt**Recommended Dilutions:** ELISA 1:5000-10000; Flow Cyt 1:100**Host Species:** Rabbit**Isotype:** Rabbit IgG**Purification:** Purified from cell culture supernatant by affinity chromatography**Species Reactivity:** Human IL15RA**Constituents:** Lyophilized from sterile PBS, pH 7.4. 5 % – 8% trehalose is added as protectants before lyophilization.

Storage & Shipping: Store at -20°C to -80°C for 12 months in lyophilized form. After reconstitution, if not intended for use within a month, aliquot and store at -80°C (Avoid repeated freezing and thawing).

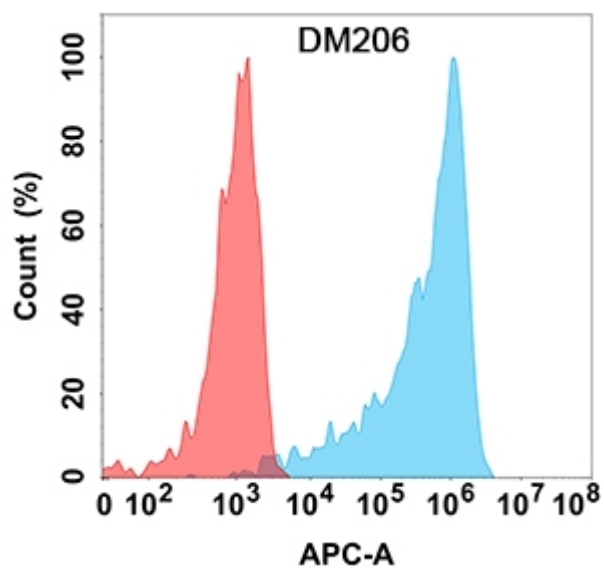


Figure 1. Flow cytometry analysis with Anti-IL15RA (DM206) on Expi293 cells transfected with human IL15RA (Blue histogram) or Expi293 transfected with irrelevant protein (Red histogram).