

IL21R (DMC225) IGG1 CHIMERIC MAB

Cat.#: 28174

Product Name: Anti-IL21R(DMC225) IgG1 Chimeric Monoclonal Antibody

Synonyms: CD360; IMD56; NILR

Description: Anti-IL21R antibody(DMC225) IgG1 Chimeric Monoclonal Antibody

Background: The protein encoded by this gene is a cytokine receptor for interleukin 21 (IL21). It belongs to the type I cytokine receptors; and has been shown to form a heterodimeric receptor complex with the common gamma-chain; a receptor subunit also shared by the receptors for interleukin 2; 4; 7; 9; and 15. This receptor transduces the growth promoting signal of IL21; and is important for the proliferation and differentiation of T cells; B cells; and natural killer (NK) cells. The ligand binding of this receptor leads to the activation of multiple downstream signaling molecules; including JAK1; JAK3; STAT1; and STAT3. Knockout studies of a similar gene in mouse suggest a role for this gene in regulating immunoglobulin production. Three alternatively spliced transcript variants have been described.

Applications: ELISA; Flow Cyt

Recommended Dilutions: ELISA 1:5000-10000; Flow Cyt 1:100

Host Species: Rabbit

Isotype: Rabbit:Human Fc chimeric IgG1

Purification: Purified from cell culture supernatant by affinity chromatography

Species Reactivity: Human IL21R

Constituents: Lyophilized from sterile PBS, pH 7.4. 5 % – 8% trehalose is added as protectants before lyophilization.

Storage & Shipping: Store at -20°C to -80°C for 12 months in lyophilized form. After reconstitution, if not intended for use within a month, aliquot and store at -80°C (Avoid repeated freezing and thawing).

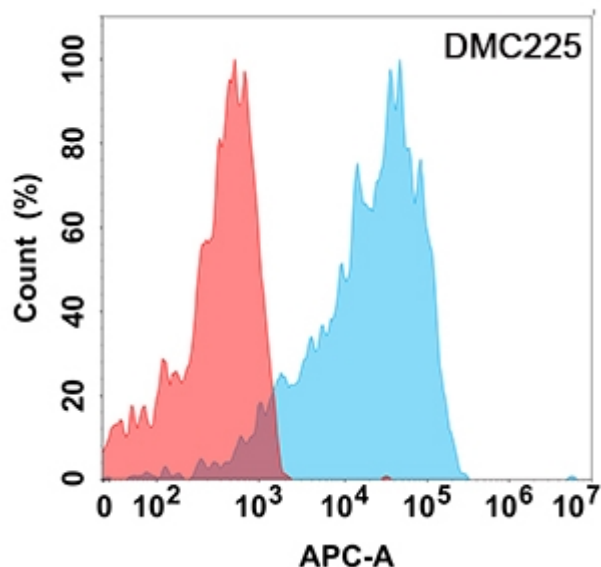


Figure 1. Flow cytometry analysis with Anti-IL21R (DMC225) on Expi293 cells transfected with human IL21R (Blue histogram) or Expi293 transfected with irrelevant protein (Red histogram).