

IL2RA (DM148) RABBIT MAB

Cat.#: 28492

Product Name: Anti-IL2RA(DM148) Rabbit Monoclonal Antibody

Synonyms: IL2RA;CD25;p55;IL2-RA;IL-2-RA

Description: Anti-IL2RA antibody(DM148) Rabbit Monoclonal Antibody

Background: The interleukin 2 (IL2) receptor alpha (IL2RA) and beta (IL2RB) chains; together with the common gamma chain (IL2RG); constitute the high-affinity IL2 receptor. Homodimeric alpha chains (IL2RA) result in low-affinity receptor; while homodimeric beta (IL2RB) chains produce a medium-affinity receptor. Normally an integral-membrane protein; soluble IL2RA has been isolated and determined to result from extracellular proteolysis. Alternately-spliced IL2RA mRNAs have been isolated; but the significance of each is presently unknown. Mutations in this gene are associated with interleukin 2 receptor alpha deficiency.

Applications: ELISA; Flow Cyt

Recommended Dilutions: ELISA 1:5000-10000; Flow Cyt 1:100

Host Species: Rabbit

Isotype: Rabbit IgG

Purification: Purified from cell culture supernatant by affinity chromatography

Species Reactivity: Human IL2RA

Constituents: Lyophilized from sterile PBS, pH 7.4. 5% – 8% trehalose is added as protectants before lyophilization.

Storage & Shipping: Store at -20°C to -80°C for 12 months in lyophilized form. After reconstitution, if not intended for use within a month, aliquot and store at -80°C (Avoid repeated freezing and thawing).

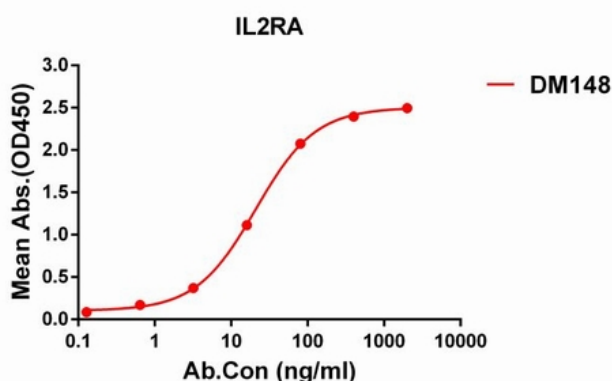


Figure 1. ELISA plate pre-coated by 1 µg/ml (100 µl/well) Human IL2RA protein, His tagged protein 11217 can bind Rabbit anti-IL2RA monoclonal antibody (clone: DM148) in a linear range of 5-100 ng/ml.

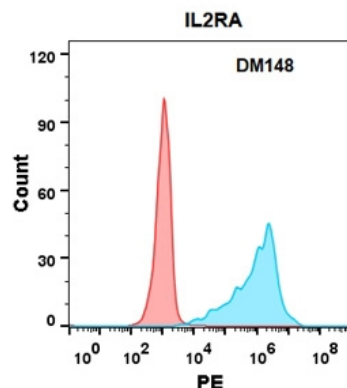


Figure 2. Flow cytometry analysis with Anti-IL2RA (DM148) on Expi293 cells transfected with human IL2RA (Blue histogram) or Expi293 transfected with irrelevant protein (Red histogram).