

IL6R (DM152) RABBIT MAB

Cat.#: 28496

Product Name: Anti-IL6R(DM152) Rabbit Monoclonal Antibody

Synonyms: CD126; gp80; IL-6R-1; IL-6RA; IL6Q; IL6RA; IL6RQ

Description: Anti-IL6R antibody(DM152) Rabbit Monoclonal Antibody

Background: This gene encodes a subunit of the interleukin 6 (IL6) receptor complex. Interleukin 6 is a potent pleiotropic cytokine that regulates cell growth and differentiation and plays an important role in the immune response. The IL6 receptor is a protein complex consisting of this protein and interleukin 6 signal transducer (IL6ST:GP130:IL6-beta); a receptor subunit also shared by many other cytokines. Dysregulated production of IL6 and this receptor are implicated in the pathogenesis of many diseases; such as multiple myeloma; autoimmune diseases and prostate cancer. Alternatively spliced transcript variants encoding distinct isoforms have been reported. A pseudogene of this gene is found on chromosome 9.

Applications: ELISA; Flow Cyt

Recommended Dilutions: ELISA 1:5000-10000; Flow Cyt 1:100

Host Species: Rabbit

Isotype: Rabbit IgG

Purification: Purified from cell culture supernatant by affinity chromatography

Species Reactivity: Human IL6R

Constituents: Lyophilized from sterile PBS, pH 7.4. 5 % – 8 % trehalose is added as protectants before lyophilization.

Storage & Shipping: Store at -20°C to -80°C for 12 months in lyophilized form. After reconstitution, if not intended for use within a month, aliquot and store at -80°C (Avoid repeated freezing and thawing).

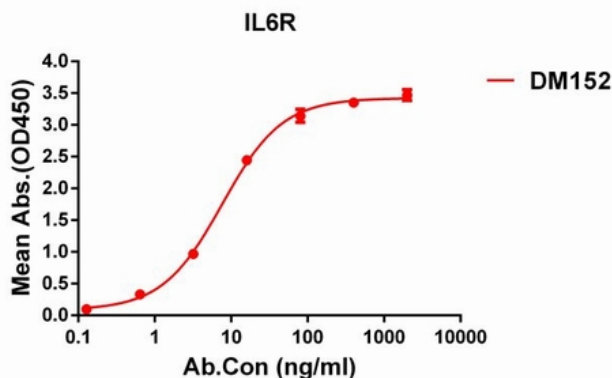


Figure 1. ELISA plate pre-coated by 1 µg/ml (100 µl/well) Human IL6R protein, His tagged protein 12284 can bind Rabbit anti-IL6R monoclonal antibody (clone: DM152) in a linear range of 1-100 ng/ml.

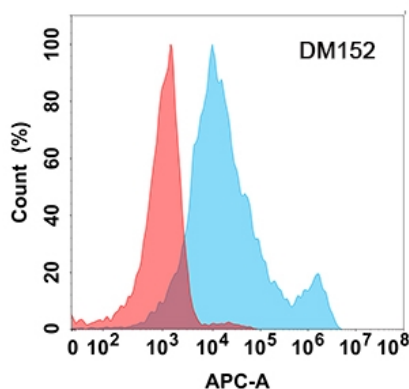


Figure 2. Flow cytometry analysis with Anti-IL-6R (DM152) on Expi293 cells transfected with human IL-6R (Blue histogram) or Expi293 transfected with irrelevant protein (Red histogram).