

## CLDN6 MAB (IMAB027 MAB)

**Cat.#:** 28085

**Product Name:** Anti-CLDN6 (IMAB027) Monoclonal Antibody

**Synonyms:** Claudin 6;Claudin-6;Skullin

**Description:** Anti-CLDN6 (IMAB027) Monoclonal Antibody

**Background:** Research grade biosimilar. Not for use in therapeutic or diagnostic procedures for humans or animals.

**Applications:** ELISA; Flow Cyt

**Recommended Dilutions:** ELISA 1:5000-10000; Flow Cyt 1:100

**Host Species:** Humanized

**Isotype:** IgG1

**Purification:** Purified from cell culture supernatant by affinity chromatography

**Species Reactivity:** Human CLDN6

**Constituents:** Lyophilized from sterile PBS, pH 7.4. 5% – 8% trehalose is added as protectants before lyophilization.

**Storage & Shipping:** Store at -20°C to -80°C for 12 months in lyophilized form. After reconstitution, if not intended for use within a month, aliquot and store at -80°C (Avoid repeated freezing and thawing).

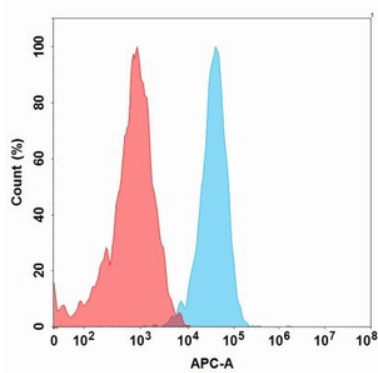


Figure 1. Flow cytometry analysis with 1  $\mu$ g/mL Anti-CLDN6 (IMAB027) mAb (28085) on Expi293 cells transfected with Human CLDN6 protein (Blue histogram) or Expi293 transfected with irrelevant protein (Red histogram).

## Anti-CLDN6 (IMAB027) mAb ELISA

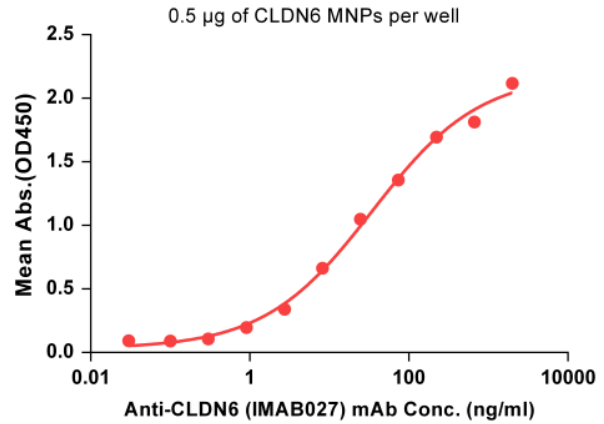


Figure 2. ELISA plates were pre-coated with 0.5  $\mu$ g/per well purified human CLDN6 MNPs. Serial diluted Anti-CLDN6 monoclonal antibody (28085) solutions were added, washed, and incubated with secondary antibody before ELISA reading. From above data, the EC50 for 28085 binding with Claudin6 MNPs is 34.36 ng/ml.

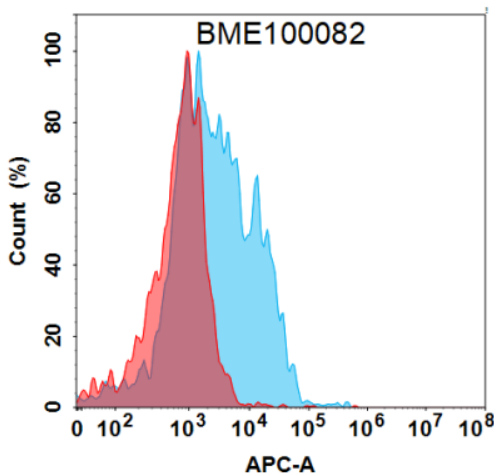


Figure 3. Flow cytometry analysis with 15  $\mu$ g/mL Anti-CLDN6 (IMAB027) mAb (28085) on Expi293 cells transfected with Human CLDN9 protein (Blue histogram) or Expi293 transfected with irrelevant protein (Red histogram).