

GUCY2C MAB (INDUSATUMAB)

Cat.#: 28073

Product Name: Anti-GUCY2C(Indusatumab) Monoclonal Antibody

Synonyms: DIAR6;GC-C;GUC2C;MECIL;MUCIL;STAR

Description: Anti-GUCY2C(indusatumab) Monoclonal Antibody

Background: Research grade biosimilar. Not for use in therapeutic or diagnostic procedures for humans or animals.

Applications: ELISA; Flow Cyt

Recommended Dilutions: ELISA 1:5000-10000; Flow Cyt 1:100

Host Species: Homo sapiens

Isotype: IgG1

Purification: Purified from cell culture supernatant by affinity chromatography

Species Reactivity: Human GUCY2C

Constituents: Lyophilized from sterile PBS, pH 7.4. 5 % – 8% trehalose is added as protectants before lyophilization.

Storage & Shipping: Store at -20°C to -80°C for 12 months in lyophilized form. After reconstitution, if not intended for use within a month, aliquot and store at -80°C (Avoid repeated freezing and thawing).

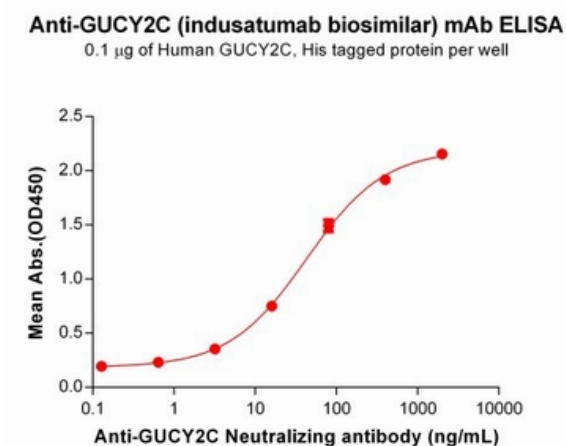


Figure 1. ELISA plate pre-coated by $1\ \mu\text{g}/\text{mL}$ ($100\ \mu\text{l}/\text{well}$) Human GUCY2C protein, His Tag 11252 can bind Anti-GUCY2C Neutralizing antibody (28073) in a linear range of 3.2-400 ng/mL.

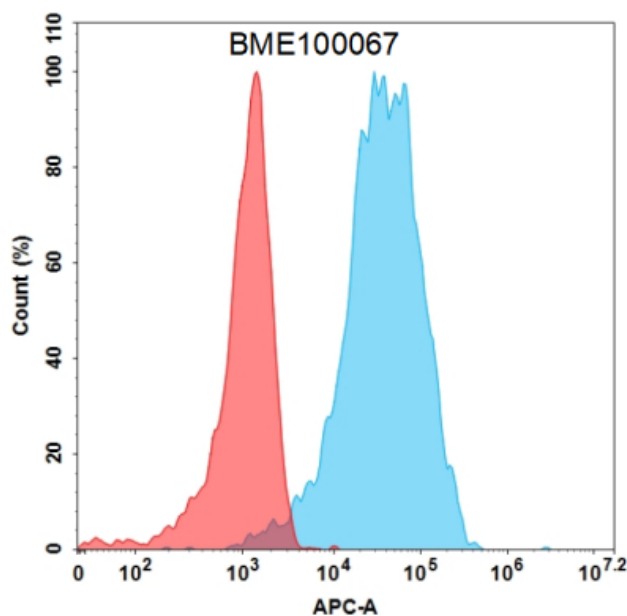


Figure 2. Flow cytometry analysis with Anti-GUCY2C(indusatumab biosimilar) mAb $1\ \mu\text{g}/\text{mL}$ on Expi293 cells transfected with Human GUCY2C (Blue histogram) or Expi293 transfected with irrelevant protein (Red histogram).