

JAK2(R683S)**JAK2(R683S) Monoclonal Antibody****Cat. #:** 26315**Size:** 100 µL**Gene Symbol:** JAK2, JTK10, THCYT3**Description:** Anti-JAK2(R683S) Mouse Monoclonal Antibody

Background: JAK2 is a non-receptor tyrosine kinase. It is a member of the Janus kinase family and has been implicated in signaling by members of the type II cytokine receptor family, the GM-CSF receptor family, the gp130 receptor family, and the single chain receptors. JAK2 orthologs have been identified in all mammals for which complete genome data are available. Mutations of JAK2 have been implicated in polycythemia vera, essential thrombocythemia, and myelofibrosis as well as other myeloproliferative disorders.

Immunogen: A synthetic peptide from the internal region of JAK2 which includes the mutation of R683S, human origin.

Applications: ELISA, WB, IHC

Recommended Dilutions:

ELISA: 1:1000–1:2000

WB: 1:500–1:1000

IHC: 1:50–1:100

Concentration: 0.5 mg/ml

Host Species: Mouse

Format: Liquid

Clonality: Monoclonal

Isotype: IgG

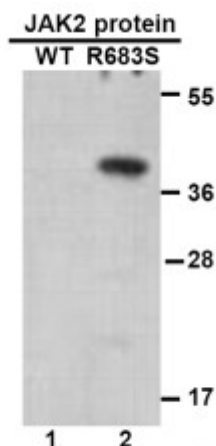
Purity: Purified from ascites

Preservative: No

Constituents: PBS (without Mg²⁺ and Ca²⁺), pH 7.4, 150 mM NaCl, 50% glycerol

Species Reactivity: Recognizes R683S mutant, but not wild type JAK2 of vertebrates.

Storage Conditions: Store at –20°C. Avoid repeated freezing and thawing

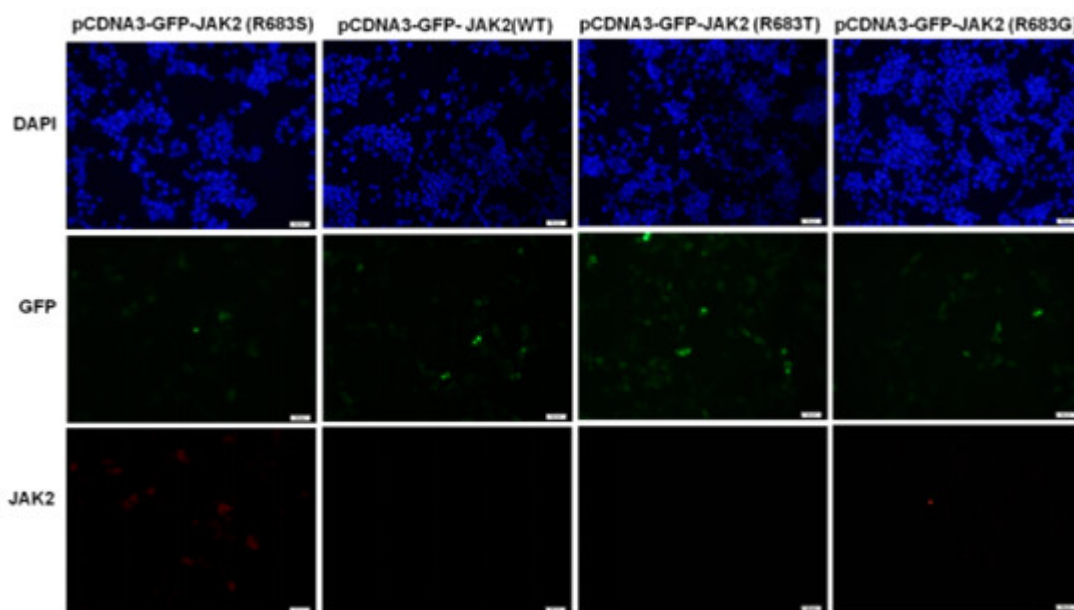


WB: anti-JAK2 (R683S) mAb

Western blot:

Western blot analysis of recombinant JAK2(R683S) and wild type proteins. Purified His-tagged JAK2(R683S) protein (lane2) and corresponding wild type protein (lane1) were blotted with Anti-JAK2(R683S) monoclonal antibody (Cat. #26314).

Immunofluorescence:



Immunofluorescence of cells expressing JAK2 proteins with Anti-JAK2(R683S) antibody. HEK293T cells were transfected with pCDNA3-GFP-JAK2(R683S) plasmid, pCDNA3-GFP-JAK2 (WT) plasmid, pCDNA3-GFP-JAK2 (R683T) plasmid or pCDNA3-GFP-JAK2 (R683G) plasmid, then fixed and stained with Anti-JAK2(R683S) monoclonal antibody (Cat. #26314).