

## JAM-A (DMC278) IGG1 CHIMERIC MAB

**Cat.#:** 28186

**Product Name:** Anti-JAM-A(DMC278) IgG1 Chimeric Monoclonal Antibody

**Synonyms:** CD321; JAM;JAM1; JAMA; JCAM; KAT; PAM-1

**Description:** Anti-JAM-A antibody(DMC278) IgG1 Chimeric Monoclonal Antibody

**Background:** Tight junctions represent one mode of cell-to-cell adhesion in epithelial or endothelial cell sheets; forming continuous seals around cells and serving as a physical barrier to prevent solutes and water from passing freely through the paracellular space. The protein encoded by this immunoglobulin superfamily gene member is an important regulator of tight junction assembly in epithelia. In addition; the encoded protein can act as (1) a receptor for reovirus; (2) a ligand for the integrin LFA1; involved in leukocyte transmigration; and (3) a platelet receptor. Multiple 5' alternatively spliced variants; encoding the same protein; have been identified but their biological validity has not been established.

**Applications:** Flow Cyt

**Recommended Dilutions:** Flow Cyt 1:100

**Host Species:** Rabbit

**Isotype:** Rabbit:Human Fc chimeric IgG1

**Purification:** Purified from cell culture supernatant by affinity chromatography

**Species Reactivity:** Human JAM-A

**Constituents:** Lyophilized from sterile PBS, pH 7.4. 5 % – 8% trehalose is added as protectants before lyophilization.

**Storage & Shipping:** Store at -20°C to -80°C for 12 months in lyophilized form. After reconstitution, if not intended for use within a month, aliquot and store at -80°C (Avoid repeated freezing and thawing).

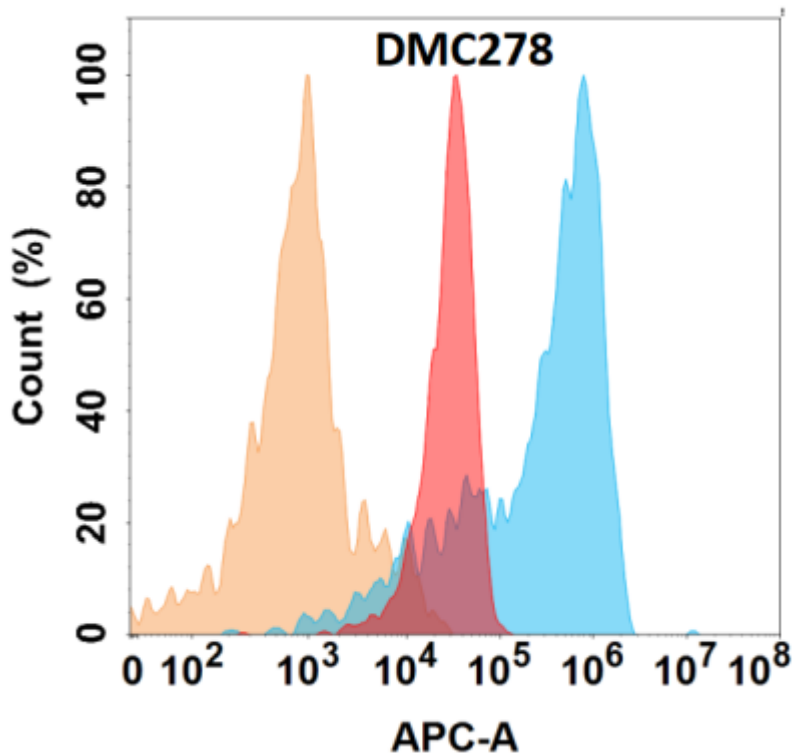


Figure 1. JAM-A protein is highly expressed on the surface of Expi293 cell membrane. Flow cytometry analysis with Anti-JAM-A (DMC278) on Expi293 cells transfected with human JAM-A (Blue histogram) or Expi293 transfected with irrelevant protein (Red histogram), and Isotype antibody on Expi293 transfected with irrelevant protein (Orange histogram).