

KIM-1 PAB

Kim-1 Polyclonal Antibody

Cat. #: 21110

Gene Symbol: Kim-1

Description: Anti-Kim-1 Rabbit Polyclonal Antibody

Background: Kidney injury molecule-1 (Kim-1) is a type 1 membrane protein with extracellular immunoglobulin and mucin domains. Kim-1 mRNA and protein are expressed at very low levels in normal kidney, but expression increases dramatically after injury in proximal tubule epithelial cells in postischemic rodent kidney and in humans during ischemic acute renal failure.

Immunogen: A synthetic peptide from the internal region of Kim-1 of human origin

Applications: ELISA, WB, IHC, IP

Recommended Dilutions:

ELISA: 1:100–1:5000

WB: 1:200–1:1000

IHC: 1:50–1:100

Concentration: 0.2 mg/ml

Host Species: Rabbit

Format: Liquid

Clonality: Polyclonal

Isotype: IgG

Purity: Purified from serum

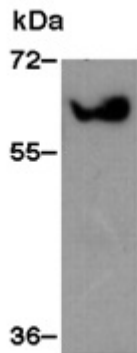
Preservative: No

Constituents: PBS (without Mg^{2+} and Ca^{2+}), pH 7.4, 150 mM NaCl, 50% glycerol

Species Reactivity: Kim-1 antibody recognizes Kim-1 from vertebrates.

Storage Conditions: Store at $-20^{\circ}C$. Avoid repeated freezing and thawing

Western blot:



WB: anti-Kim-1 pAb

HEK 293T cell lysate was used for western blot with Anti-Kim-1 polyclonal antibody (Cat # 21110).