

KIT(D820E)**KIT(D820E)****Cat. #:** 26274**Gene Symbol:** C-Kit; CD117; KIT; PBT; SCFR**Description:** Anti-KIT(D820E) Mouse Monoclonal Antibody

Background: Tyrosine-protein kinase Kit, also known as proto-oncogene c-Kit or CD117 or Mast/stem cell growth factor receptor (SCFR), is a receptor tyrosine kinase protein that in humans is encoded by the KIT gene. Activating mutations in this gene are associated with gastrointestinal stromal tumors, testicular seminoma, mast cell disease, melanoma, acute myeloid leukemia, while inactivating mutations are associated with the genetic defect piebaldism.

Immunogen: A synthetic peptide from the internal region of KIT which includes the mutation of D820E, human origin.

Applications: ELISA, WB, IHC**Recommended Dilutions:**

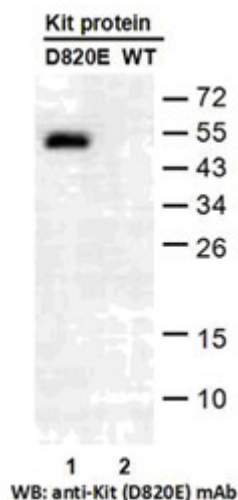
ELISA: 1:1000–1:5000

WB: 1:500–1:1000

IHC: 1:50–1:100

Concentration: 1 mg/ml**Host Species:** Mouse**Format:** Liquid**Clonality:** Monoclonal**Isotype:** IgG**Purity:** Purified from ascites**Preservative:** No**Constituents:** PBS (without Mg²⁺ and Ca²⁺), pH 7.4, 150 mM NaCl, 50% glycerol**Species Reactivity:** Recognizes D820E mutant, but not wild type KIT of vertebrates.**Storage Conditions:** Store at –20°C. Avoid repeated freezing and thawing

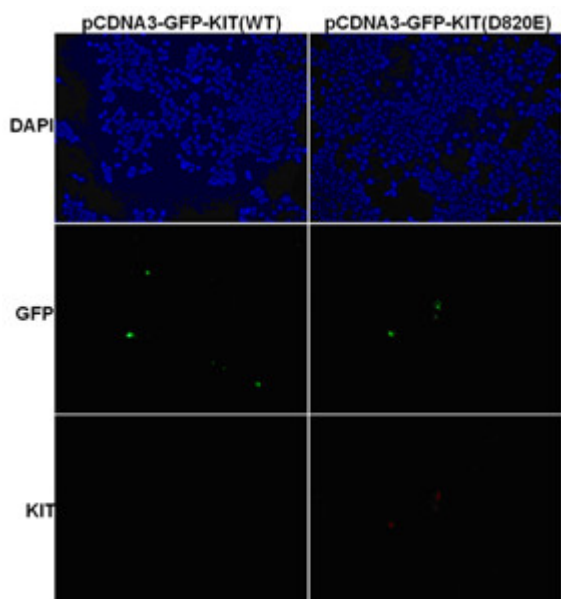
Western blot:



Western blot analysis of recombinant KIT (D820E) and wild type proteins.

Purified His-tagged KIT (D820E) protein (lane 1) and corresponding wild type protein (lane 2) were blotted with Anti-KIT(D820E) monoclonal antibody (Cat. #26274).

Immunofluorescence:



Immunofluorescence of cells expressing KIT proteins with Anti-KIT(D820E) antibody.

HEK293T cells were transfected with pCDNA3-GFP-KIT (WT) plasmid (left column) or pCDNA3-GFP-KIT (D820E) plasmid (right column), then fixed and stained with anti- KIT (D820E) monoclonal antibody (Cat. #26274).