

KIT(P577-D579 DEL)

KIT(P577-D579 DEL)

Cat. #: 26288

Gene Symbol: C-Kit; CD117; KIT; PBT; SCFR

Description: Anti-KIT(P577-D579 DEL) Mouse Monoclonal Antibody

Background: Tyrosine-protein kinase Kit, also known as proto-oncogene c-Kit or CD117 or Mast/stem cell growth factor receptor (SCFR), is a receptor tyrosine kinase protein that in humans is encoded by the KIT gene. Activating mutations in this gene are associated with gastrointestinal stromal tumors, testicular seminoma, mast cell disease, melanoma, acute myeloid leukemia, while inactivating mutations are associated with the genetic defect piebaldism.

Immunogen: A synthetic peptide from the internal region of KIT which includes the deletion of P577-D579, human origin.

Applications: ELISA, WB, IHC

Recommended Dilutions:

ELISA: 1:1000-1:5000

WB: 1:500-1:1000

IHC: 1:50-1:100

Concentration: 1 mg/ml

Host Species: Mouse

Format: Liquid

Clonality: Monoclonal

Isotype: IgG

Purity: Purified from ascites

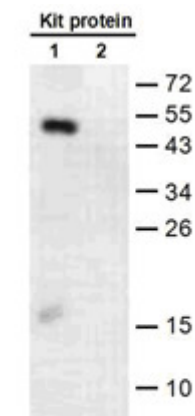
Preservative: No

Constituents: PBS (without Mg²⁺ and Ca²⁺), pH 7.4, 150 mM NaCl, 50% glycerol

Species Reactivity: Recognizes P577-D579 DEL mutant, but not wild type KIT of vertebrates.

Storage Conditions: Store at -20°C. Avoid repeated freezing and thawing

Western blot:

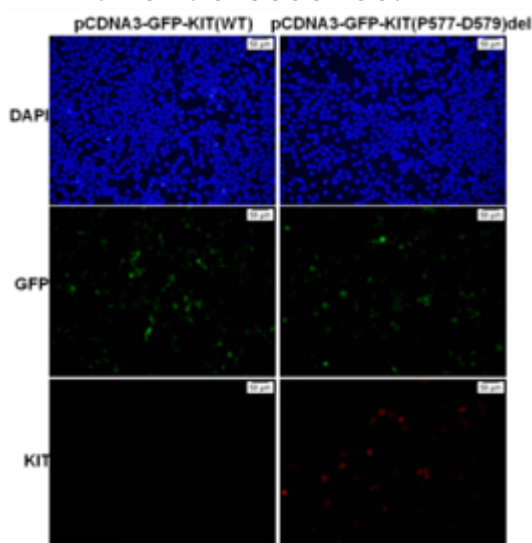


1: Kit P577-D579del protein
2: Kit WT protein
WB: anti-Ras (Q61R) mAb

Western blot analysis of recombinant KIT(P577-D579 DEL) and wild type proteins.

Purified His-tagged KIT(P577-D579 DEL) protein (lane 1) and corresponding wild type protein (lane 2) were blotted with Anti-KIT(P577-D579 DEL) monoclonal antibody (Cat. #26288).

Immunofluorescence:



Immunofluorescence of cells expressing KIT proteins with Anti-KIT(P577-D579 DEL) antibody. HEK293T cells were transfected with pCDNA3-GFP-KIT (WT) plasmid (left column) or pCDNA3-GFP-KIT(P577-D579 DEL) plasmid (right column), then fixed and stained with Anti-KIT(P577-D579 DEL) monoclonal antibody (Cat. #26288).