

KIT(V560D)**KIT(V560D)****Cat. #:** 26281**Gene Symbol:** C-Kit; CD117; KIT; PBT; SCFR**Description:** Anti-KIT(V560D) Mouse Monoclonal Antibody

Background: Tyrosine-protein kinase Kit, also known as proto-oncogene c-Kit or CD117 or Mast/stem cell growth factor receptor (SCFR), is a receptor tyrosine kinase protein that in humans is encoded by the KIT gene. Activating mutations in this gene are associated with gastrointestinal stromal tumors, testicular seminoma, mast cell disease, melanoma, acute myeloid leukemia, while inactivating mutations are associated with the genetic defect piebaldism.

Immunogen: A synthetic peptide from the internal region of KIT which includes the mutation of V560D, human origin.

Applications: ELISA, WB**Recommended Dilutions:**

ELISA: 1:1000–1:5000

WB: 1:500–1:1000

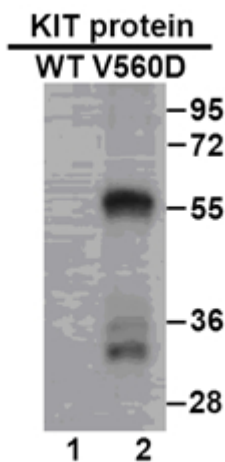
Concentration: 1 mg/ml**Host Species:** Mouse**Format:** Liquid**Clonality:** Monoclonal**Isotype:** IgG**Purity:** Purified from ascites**Preservative:** No

Constituents: PBS (without Mg^{2+} and Ca^{2+}), pH 7.4, 150 mM NaCl, 50% glycerol

Species Reactivity: Recognizes V560D mutant, but not wild type KIT of vertebrates.

Storage Conditions: Store at -20°C . Avoid repeated freezing and thawing

Western blot:



WB: Anti- KIT (V560D) mAb

Western blot analysis of recombinant KIT(V560D) and wild type proteins.

Purified His-tagged KIT(V560D) protein (lane 2) and corresponding wild type protein (lane 1) were blotted with Anti-KIT(V560D) monoclonal antibody (Cat. #26281).