

KLRG1 (DM184) RABBIT MAB

Cat.#: 28527

Product Name: Anti-KLRG1(DM184) Rabbit Monoclonal Antibody

Synonyms: CLEC15A; MAFA; MAFAL

Description: Anti-KLRG1 antibody(DM184) Rabbit Monoclonal Antibody

Background: Natural killer (NK) cells are lymphocytes that can mediate lysis of certain tumor cells and virus-infected cells without previous activation. They can also regulate specific humoral and cell-mediated immunity. The protein encoded by this gene belongs to the killer cell lectin-like receptor (KLR) family; which is a group of transmembrane proteins preferentially expressed in NK cells. Studies in mice suggested that the expression of this gene may be regulated by MHC class I molecules.

Applications: ELISA; Flow Cyt

Recommended Dilutions: ELISA 1:5000-10000; Flow Cyt 1:100

Host Species: Rabbit

Isotype: Rabbit IgG

Purification: Purified from cell culture supernatant by affinity chromatography

Species Reactivity: Human KLRG1

Constituents: Lyophilized from sterile PBS, pH 7.4. 5 % – 8% trehalose is added as protectants before lyophilization.

Storage & Shipping: Store at -20°C to -80°C for 12 months in lyophilized form. After reconstitution, if not intended for use within a month, aliquot and store at -80°C (Avoid repeated freezing and thawing).

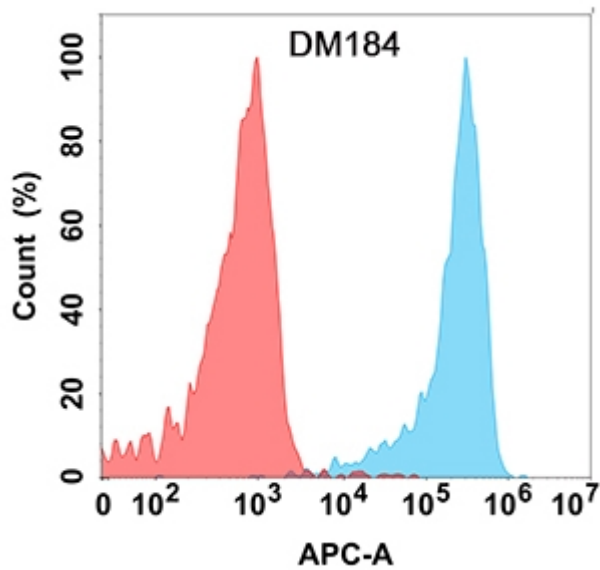


Figure 1. Flow cytometry analysis with Anti-KLRG1 (DM184) on Expi293 cells transfected with human KLRG1 (Blue histogram) or Expi293 transfected with irrelevant protein (Red histogram).