

LAG3 (DM160) RABBIT MAB

Cat.#: 28504

Product Name: Anti-LAG3(DM160) Rabbit Monoclonal Antibody

Synonyms: LAG-3; CD223

Description: Anti-LAG3 antibody(DM160) Rabbit Monoclonal Antibody

Background: Lymphocyte-activation protein 3 belongs to Ig superfamily and contains 4 extracellular Ig-like domains. The LAG3 gene contains 8 exons. The sequence data; exon:intron organization; and chromosomal localization all indicate a close relationship of LAG3 to CD4. [provided by RefSeq; Jul 2008]

Applications: ELISA; Flow Cyt

Recommended Dilutions: ELISA 1:5000-10000; Flow Cyt 1:100

Host Species: Rabbit

Isotype: Rabbit IgG

Purification: Purified from cell culture supernatant by affinity chromatography

Species Reactivity: Human LAG3

Constituents: Lyophilized from sterile PBS, pH 7.4. 5 % – 8% trehalose is added as protectants before lyophilization.

Storage & Shipping: Store at -20°C to -80°C for 12 months in lyophilized form. After reconstitution, if not intended for use within a month, aliquot and store at -80°C (Avoid repeated freezing and thawing).

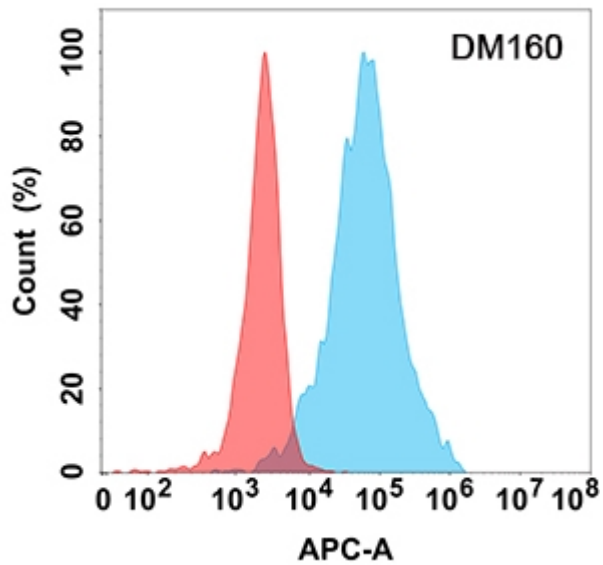


Figure 1. Flow cytometry analysis with Anti-LAG3 (DM160) on Expi293 cells transfected with human LAG3 (Blue histogram) or Expi293 transfected with irrelevant protein (Red histogram).