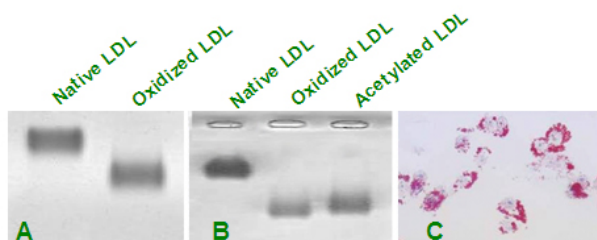


LDL

Name:	LDL
Cat. #:	10453
Size:	2.0 mg
Description:	Human Low Density Lipoprotein
Purity:	98% (Co-migrates with reference on agarose gel electrophoresis)
Concentration:	Minimum 2.50 mg/ml protein
Background:	LDL is a large protein (MW 3,500 kDa) with a diameter of 25.8 nm. It is composed of approximately 20-25% protein and 75-80% lipid. The lipid portion can be further described as 9% free cholesterol, 42% cholesteryl ester, 20-24% phospholipid, and 5% triglyceride.
Source:	Human plasma, which tested negative for HBsAG, HIV1/2, HIV-NAT, HCV, HCV-NAT and Syphilis. It is purified via ultracentrifugation to homogeneity determined by agarose gel electrophoresis. Each lot is analyzed on agarose gel electrophoresis for migration versus LDL.
Tested Applications:	Sample lots of LDL are evaluated for receptor binding to peritoneal macrophages in conjunction with our Dil-Ox-LDL and [¹²⁵ I] Ox-LDL.
Storage & Stability:	This product is stable for 6 weeks after receipt when handled aseptically and stored at 2-8°C (Don't Freeze). Note: After prolonged storage, some precipitate may be observed. This is normal for the product. Spin in centrifugation at 1000×g for 3 minutes before using.
Packaging:	LDL is membrane filtered and aseptically packaged under nitrogen in a solution containing phosphate-buffered saline at pH 7.4 and 0.2 mM EDTA-Na2. The product requires 1-2 weeks lead time. Please plan your experiments in advance and use the fresh material.



Native-LDL (n-LDL), Oxidized-LDL (ox-LDL) and Acetylated-LDL (Ac-LDL) were loaded on agarose gel and electrophoresed for 60 mins. The lipoproteins were stained with Sudan Black (A and B). Oil red O staining was used to determine the formation of foam cell. RAW264.7 were incubated with 80 µg/mL ox-LDL for 24 hrs.