

KIR2DL2 MAB (LIRILUMAB)

Cat.#: 28129

Product Name: Anti-KIR2DL2(Lirilumab) Monoclonal Antibody

Synonyms: CD158b;CD158B1;NKAT-6;NKAT6;p58.2

Description: Anti-KIR2DL2(lirilumab) Monoclonal Antibody

Background: Research grade biosimilar. Not for use in therapeutic or diagnostic procedures for humans or animals.

Applications: Flow Cyt

Recommended Dilutions: Flow Cyt 1:100

Host Species: Homo sapiens

Isotype: IgG4

Purification: Purified from cell culture supernatant by affinity chromatography

Species Reactivity: Human KIR2DL2

Constituents: Lyophilized from sterile PBS, pH 7.4. 5 % – 8% trehalose is added as protectants before lyophilization.

Storage & Shipping: Store at -20°C to -80°C for 12 months in lyophilized form. After reconstitution, if not intended for use within a month, aliquot and store at -80°C (Avoid repeated freezing and thawing).

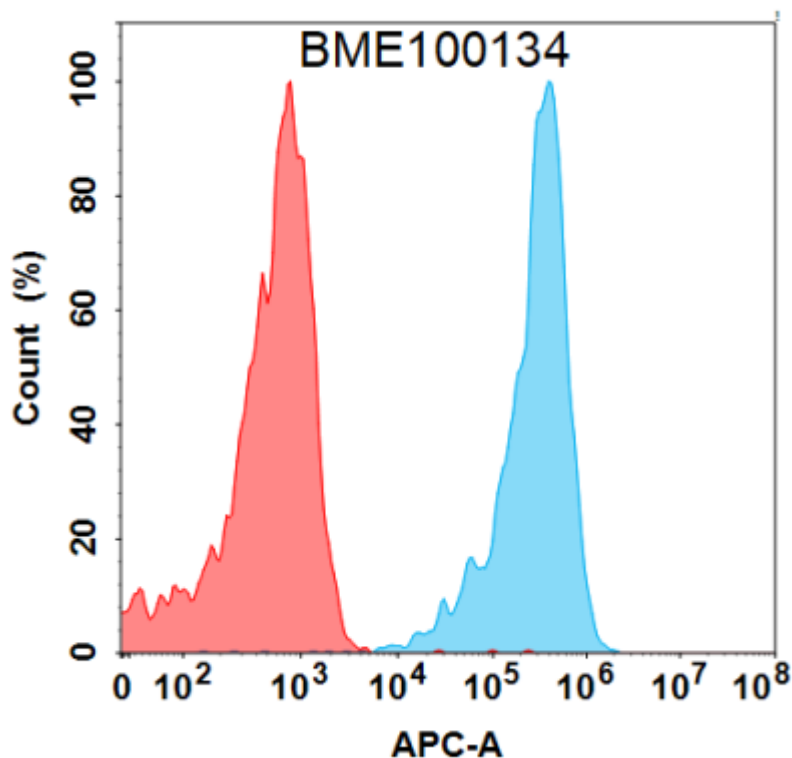


Figure 1. Flow cytometry analysis with 1 µg/mL Anti-KIR2DL2 (lirilumab biosimilar) mAb (28129) on Expi293 cells transfected with Human KIR2DL2 protein (Blue histogram) or Expi293 transfected with irrelevant protein (Red histogram).