

CLEC4C MAB (LITIFILIMAB)

Cat.#: 28147

Product Name: Anti-CLEC4C (Litifilimab) Monoclonal Antibody

Synonyms: BDCA-2;CD303

Description: Anti-CLEC4C (litifilimab) Monoclonal Antibody

Background: Research grade biosimilar. Not for use in therapeutic or diagnostic procedures for humans or animals.

Applications: ELISA; Flow Cyt

Recommended Dilutions: ELISA 1:5000-10000; Flow Cyt 1:100

Host Species: Humanized

Isotype: IgG1(E239D, M241L)

Purification: Purified from cell culture supernatant by affinity chromatography

Species Reactivity: Human CLEC4C

Constituents: Lyophilized from sterile PBS, pH 7.4. 5% – 8% trehalose is added as protectants before lyophilization.

Storage & Shipping: Store at -20°C to -80°C for 12 months in lyophilized form. After reconstitution, if not intended for use within a month, aliquot and store at -80°C (Avoid repeated freezing and thawing).

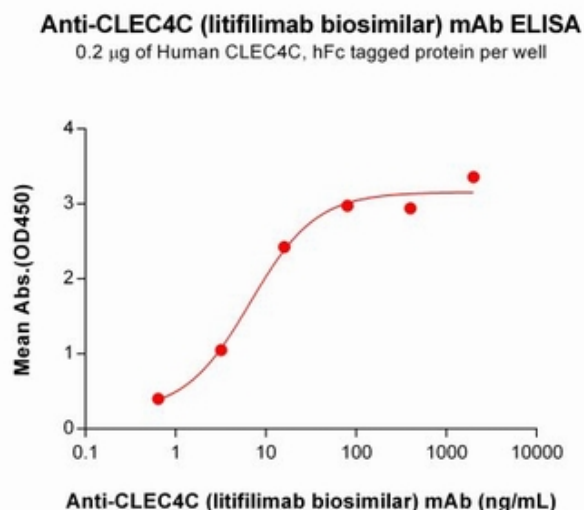


Figure 1. ELISA plate pre-coated by 2 µg/mL (100 µl/well) Human CLEC4C Protein, hFc Tag (11544) can bind Anti-CLEC4C (litifilimab biosimilar) mAb (28147) in a linear range of 0.64-80.00 ng/mL. In order to specifically detect 28147, mouse anti-human Fab-specific antibody was used as detection antibody.

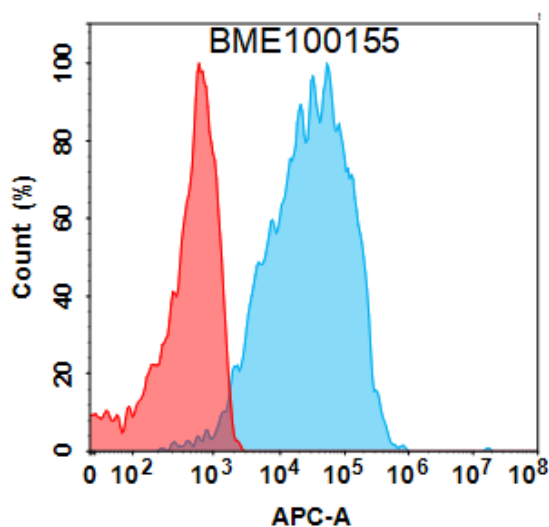


Figure 2. Flow cytometry analysis with 1 µg/mL Anti-CLEC4C (litifilimab biosimilar) mAb (28147) on Expi293 cells transfected with Human CLEC4C protein (Blue histogram) or Expi293 transfected with irrelevant protein (Red histogram).



Product Description

Pioneering GTPase and Oncogene Product Development since 2010
