

## CD56 MAB (LORVOTUZUMAB)

**Cat.#:** 28102

**Product Name:** Anti-CD56(Lorvotuzumab) Monoclonal Antibody

**Synonyms:** MSK39;NCAM

**Description:** Anti-CD56(lorvotuzumab ) Monoclonal Antibody

**Background:** Research grade biosimilar. Not for use in therapeutic or diagnostic procedures for humans or animals.

**Applications:** ELISA; Flow Cyt

**Recommended Dilutions:** ELISA 1:5000-10000; Flow Cyt 1:100

**Host Species:** Humanized

**Isotype:** IgG1

**Purification:** Purified from cell culture supernatant by affinity chromatography

**Species Reactivity:** Human CD56

**Constituents:** Lyophilized from sterile PBS, pH 7.4. 5 % – 8% trehalose is added as protectants before lyophilization.

**Storage & Shipping:** Store at -20°C to -80°C for 12 months in lyophilized form. After reconstitution, if not intended for use within a month, aliquot and store at -80°C (Avoid repeated freezing and thawing).

## Anti-CD56 (lorvotuzumab biosimilar) mAb ELISA

0.2 µg of Human CD56, His tagged protein per well

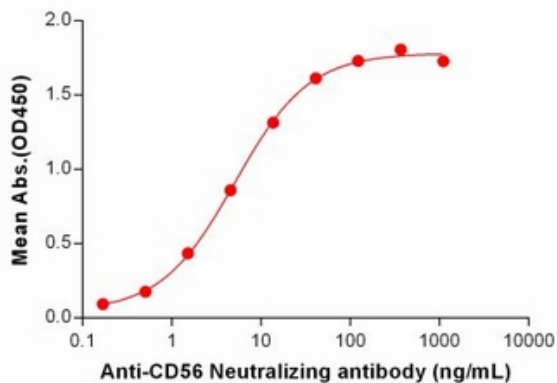


Figure 1. ELISA plate pre-coated by 2 µg/mL (100 µl/well) Human CD56 Protein, His Tag 11242 can bind Anti-CD56 Neutralizing antibody (28102) in a linear range of 0.51-41.15 ng/mL.

## Anti-CD56 (lorvotuzumab biosimilar) mAb ELISA

0.2 µg of Human CD56, hFc tagged protein per well

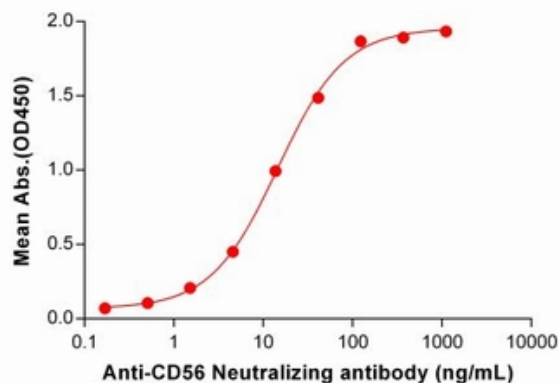


Figure 2. ELISA plate pre-coated by 2 µg/mL (100 µl/well) Human CD56 Protein, hFc Tag (11340) can bind Anti-CD56 Neutralizing antibody (28102) in a linear range of 1.52-123.46 ng/mL. In order to specifically detect 28102, mouse anti-human Fab-specific antibody was used as detection antibody.

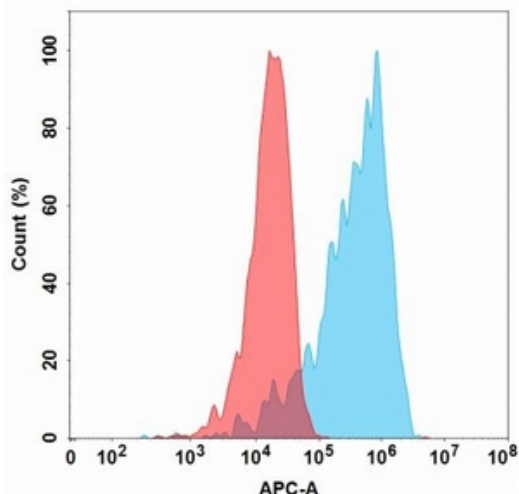


Figure 3. Flow cytometry analysis with 1 µg/mL Anti-CD56 (lorvotuzumab biosimilar) mAb (28102) on Expi293 cells transfected with Human CD56 protein (Blue histogram) or Expi293 transfected with irrelevant protein (Red histogram).