

## MESOTHELIN (DM73) RABBIT MAB

**Cat.#:** 28387

**Product Name:** Anti-Mesothelin(DM73) Rabbit Monoclonal Antibody

**Synonyms:** MSLN; Mesothelin; MPF

**Description:** Anti-mesothelin antibody(DM73) Rabbit Monoclonal Antibody

**Background:** This gene encodes a preproprotein that is proteolytically processed to generate two protein products; megakaryocyte potentiating factor and mesothelin. Megakaryocyte potentiating factor functions as a cytokine that can stimulate colony formation of bone marrow megakaryocytes. Mesothelin is a glycosylphosphatidylinositol-anchored cell-surface protein that may function as a cell adhesion protein. This protein is overexpressed in epithelial mesotheliomas; ovarian cancers and in specific squamous cell carcinomas. Alternative splicing results in multiple transcript variants; at least one of which encodes an isoform that is proteolytically processed.

**Applications:** ELISA; Flow Cyt

**Recommended Dilutions:** ELISA 1:5000-10000; Flow Cyt 1:100

**Host Species:** Rabbit

**Isotype:** Rabbit IgG

**Purification:** Purified from cell culture supernatant by affinity chromatography

**Species Reactivity:** Human Mesothelin

**Constituents:** Lyophilized from sterile PBS, pH 7.4. 5% - 8% trehalose is added as protectants before lyophilization.

**Storage & Shipping:** Store at -20°C to -80°C for 12 months in lyophilized form. After reconstitution, if not intended for use within a month, aliquot and store at -80°C (Avoid repeated freezing and thawing).

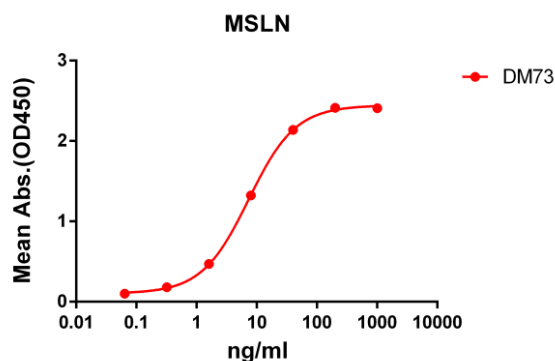


Figure 1. ELISA plate pre-coated by 2 µg/ml (100 µl/well) Human MSLN protein, mFc-His tagged protein 11159 can bind Rabbit anti-MSLN monoclonal antibody (clone: DM73) in a linear range of 1-100 ng/ml.

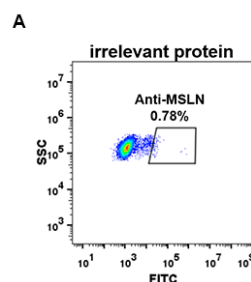


Figure 2. Expi 293 cell line transfected with irrelevant protein (A) and human mesothelin (B) were surface stained with Rabbit anti-MSLN monoclonal antibody 1 µg/ml (clone: DM73) followed by Alexa 488-conjugated anti-rabbit IgG secondary antibody.

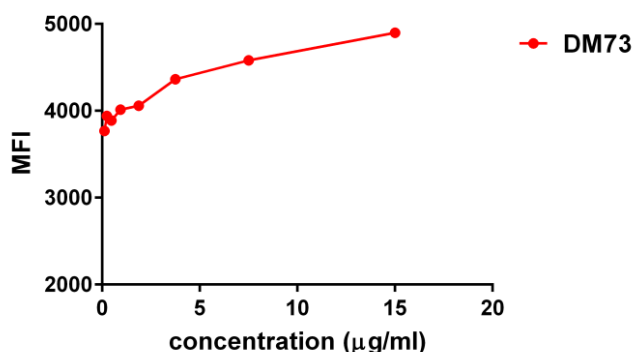


Figure 3. Flow cytometry data of serially titrated Rabbit anti-MSLN monoclonal antibody (clone: DM73) on Hela cells. The Y-axis represents the mean fluorescence intensity (MFI) while the X-axis represents the concentration of IgG used.

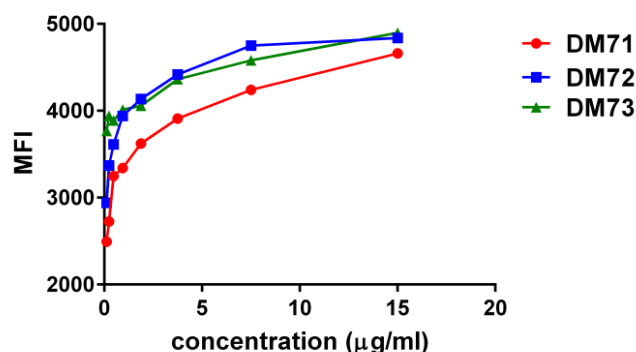


Figure 4. Affinity ranking of different Rabbit anti-MSLN mAb clones by titration of different concentration onto Hela cells. The Y-axis represents the mean fluorescence intensity (MFI) while the X-axis represents the concentration of IgG used.