

## MICB (DM168) RABBIT MAB

**Cat.#:** 28511

**Product Name:** Anti-MICB(DM168) Rabbit Monoclonal Antibody

**Synonyms:** MIC-B; PERB11.2

**Description:** Anti-MICB antibody(DM168) Rabbit Monoclonal Antibody

**Background:** This gene encodes a heavily glycosylated protein which is a ligand for the NKG2D type II receptor. Binding of the ligand activates the cytolytic response of natural killer (NK) cells; CD8 alphabeta T cells; and gammadelta T cells which express the receptor. This protein is stress-induced and is similar to MHC class I molecules; however; it does not associate with beta-2-microglobulin or bind peptides. Alternative splicing results in multiple transcript variants.

**Applications:** ELISA; Flow Cyt

**Recommended Dilutions:** ELISA 1:5000-10000; Flow Cyt 1:100

**Host Species:** Rabbit

**Isotype:** Rabbit IgG

**Purification:** Purified from cell culture supernatant by affinity chromatography

**Species Reactivity:** Human MICB

**Constituents:** Lyophilized from sterile PBS, pH 7.4. 5 % – 8% trehalose is added as protectants before lyophilization.

**Storage & Shipping:** Store at -20°C to -80°C for 12 months in lyophilized form. After reconstitution, if not intended for use within a month, aliquot and store at -80°C (Avoid repeated freezing and thawing).

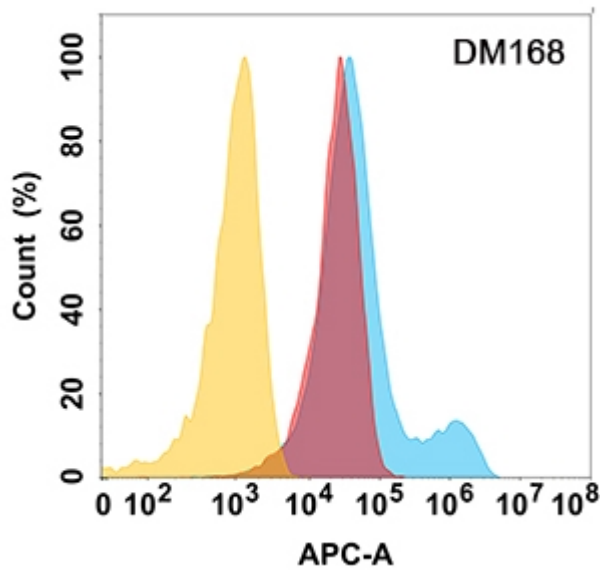


Figure 1. MICB protein is highly expressed on the surface of Expi293 cell membrane. Flow cytometry analysis with Anti-MICB (DM168) on Expi293 cells transfected with human MICB (Blue histogram) or Expi293 transfected with irrelevant protein (Red histogram), and Isotype antibody on Expi293 transfected with irrelevant protein (Orange histogram).