

LILRB2 MAB (MK-4830 MAB)

Cat.#: 28137

Product Name: Anti-LILRB2 (MK-4830) Monoclonal Antibody

Synonyms: LIR-2;ILT-4;MIR-10;CD85d

Description: Anti-LILRB2 (MK-4830) Monoclonal Antibody

Background: Research grade biosimilar. Not for use in therapeutic or diagnostic procedures for humans or animals.

Applications: ELISA; Flow Cyt

Recommended Dilutions: ELISA 1:5000-10000; Flow Cyt 1:100

Host Species: Humanized

Isotype: IgG4

Purification: Purified from cell culture supernatant by affinity chromatography

Species Reactivity: Human LILRB2

Constituents: Lyophilized from sterile PBS, pH 7.4. 5 % – 8% trehalose is added as protectants before lyophilization.

Storage & Shipping: Store at -20°C to -80°C for 12 months in lyophilized form. After reconstitution, if not intended for use within a month, aliquot and store at -80°C (Avoid repeated freezing and thawing).

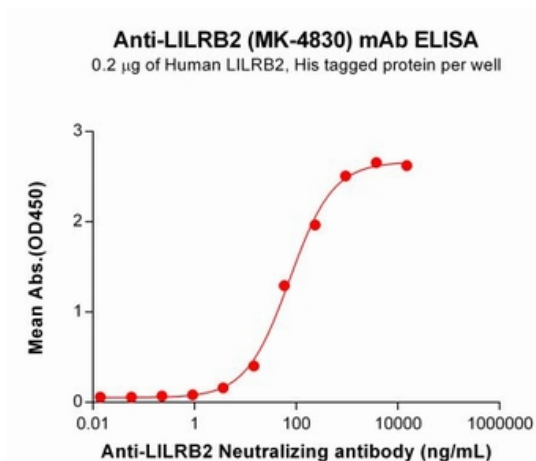


Figure 1. ELISA plate pre-coated by $2\ \mu\text{g}/\text{mL}$ ($100\ \mu\text{l}/\text{well}$) Human LILRB2 Protein, His Tag 11533 can bind Anti-LILRB2 Neutralizing antibody (28137) in a linear range of $3.66\text{--}937.50\ \text{ng}/\text{mL}$.

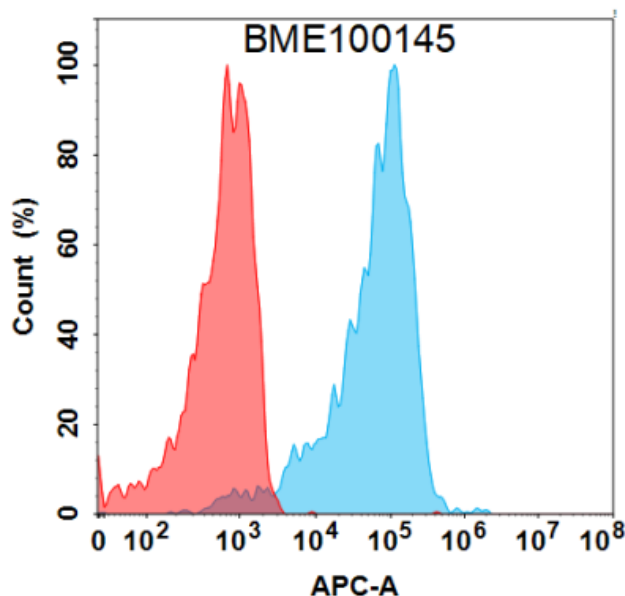


Figure 2. Flow cytometry analysis with $1\ \mu\text{g}/\text{mL}$ Anti-LILRB2 (MK-4830) mAb (28137) on Expi293 cells transfected with Human LILRB2 protein (Blue histogram) or Expi293 transfected with irrelevant protein (Red histogram).